

OWNER'S MANUAL

Assembly & Operating Instructions

SELF PROPELLED LAWN MOWER

MODEL NO. BBT-SP70



N23701



To The Owner

Thank you for purchasing our Lawn Mower. It was carefully engineered to provide excellent performance when properly operated and maintained.

Please read this entire manual prior to operating the Lawn Mower. It instructs you how to safely and easily set up, operate and maintain your Lawn Mower. Please be sure that you and any other persons who will operate the Lawn Mower carefully follow the recommended safety practices at all times. Failure to do so could result in personal injury or property damage.

All information in this manual is relative to the most recent product information available at the time of printing. Review this manual frequently to familiarise yourself with the machine, its features and operation. Please be aware that this Owner's Manual may cover a range of product specifications for various models. Characteristics and features discussed and/or illustrated in this manual may not be applicable to all models. We reserve the right to change product specifications, designs and equipment without notice and without incurring obligation.

All the power testing information used to establish the power rating of the engine equipped on this Lawn Mower can be found in the engine manufacturer's manual or website. If you have any problems or questions concerning the machine, please contact our Customer Support Department.

Throughout this manual, all references to right and left side of the Lawn Mower are observed from the operating position. The engine manufacturer is responsible for all engine-related issues with regards to performance, power-rating, specifications, warranty and service. Please refer to the engine manufacturer's Owner's Manual packed separately with your Lawn Mower for more information.

Customer Support

Please do NOT return the Lawn Mower without first contacting the Customer Support Department at bbt@bbta.com.au.

If you have difficulty assembling this product or have any questions regarding the controls, operation, or maintenance of this Lawn Mower, please contact our Customer Support Department.

SAVE THESE INSTRUCTIONS

TABLE OF CONTENTS

	Page(s)
To The Owner.....	2
Customer Support.....	2
TABLE OF CONTENTS	3
IMPORTANT SAFETY INFORMATION	4-5
Additional Information and Potential Changes.....	4
Key to Symbols.....	5
SAFETY INFORMATION	6-9
Preparation	6
Operation	6
Maintenance and Storage.....	7
Special Safety Instructions.....	7
Fuel Handling.....	8
Intended Use	8
PARTS LOCATION.....	9
ASSEMBLY.....	10-11
OIL AND FUEL FILLING	12
Filling the Fuel Tank.....	12
Oil Tank.....	12
OPERATION.....	13
Starting the Engine.....	13
Stopping the Engine	13
Self-Propeller Function	13
Work Instructions.....	13
MAINTENANCE & STORAGE	14-15
Blade.....	14
Spark Plug	15
Air Filter.....	15
Adjusting the Transmission Cable	15
Storage	15
SPECIFICATIONS.....	16
WARRANTY & SERVICE	17
EXPLODED DIAGRAM & PARTS LIST.....	18-21
Component Parts Diagram.....	18
Engine Parts Diagram	20
YOU MAY ALSO LIKE	22



IMPORTANT SAFETY INFORMATION



WARNING: Read and thoroughly understand all instructions in this manual and on the safety decals before assembling or operating this Lawn Mower. Failure to do so may cause serious injury or death. Do not allow anyone to operate this Lawn Mower who has not read this manual. As with all power equipment, a Lawn Mower can be dangerous if assembled or used improperly. Do not operate this Lawn Mower if you have any questions concerning its safe operation. To get answers to any questions, call our Customer Support Department.



This SAFETY ALERT SYMBOL identifies important safety messages in this manual. Failure to follow this important safety information may result in serious injury or death.



DANGER! This Lawn Mower was built to be operated according to the safe operation practices in this manual. As with any type of power equipment, carelessness or error on the part of the operator can result in serious injury. This Lawn Mower is capable of amputating hands and feet and throwing debris. Failure to observe the following safety instructions could result in serious injury or death.

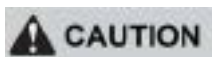
The following signals, words and meanings are intended to explain the levels of risk associated with this product.



DANGER indicates a hazardous situation which, if not avoided, will result in serious injury or death.



WARNING indicates a hazardous situation which, if not avoided, could result in serious injury or death.



CAUTION indicates a hazardous situation which, if not avoided, could result in minor or moderate injury.



NOTICE is important information about the proper use of your Lawn Mower. Failure to follow this instruction could result in damage to your Lawn Mower or property.

Additional Information and Potential Changes

We reserve the right to discontinue, change, and improve our products at any time without notice or obligation to the purchaser. The descriptions and sections contained in this manual were in effect at the time of printing. Equipment described within this manual may be optional. Some illustrations may not be applicable to your machine.

WARNING! Your Responsibility—Restrict the use of this power machine to persons who have read, understood and will follow the warnings and instructions in this manual and on the machine.

SAVE THESE INSTRUCTIONS!



IMPORTANT SAFETY INFORMATION

Key to Symbols

Symbol	Description
	READ THE OWNER'S MANUAL(S) Read, understand and follow all instructions in the manual(s) before attempting to assemble and operate.
	FACE PROTECTION Always wear safety goggles or safety glasses with side shields or a face shield when operating this product as well as ear protection.
	WEAR GLOVES Always wear non-slip, heavy-duty protective gloves when operating this product.
	WEAR SAFETY FOOTWEAR Always wear non-slip steel-toed safety footwear when operating this product.
	BEWARE OF FLYING OBJECTS Beware of thrown objects which can ricochet causing serious injury to the eyes. Always wear eye & ear protection when operating.
	BYSTANDERS Keep bystanders, helpers, pets, and children at least 25 metres from the machine while it is in operation. Stop machine if anyone enters the area.
	TOXIC FUMES Breathing exhaust fumes can cause loss of consciousness and may lead to death. DO NOT operate the machine in an enclosed space.
	PETROL IS FLAMMABLE Petrol is extremely flammable. Allow the engine to cool for at least ten minutes before refuelling.
	DANGER! Keep your hands and feet away from the cutting element!
	Remove the spark plug before carrying out repairs.
	CAUTION! Tool surfaces can be hot.
	DO NOT use in the rain.
	Blades continue to rotate after the engine stops. Rotating blades are capable of amputating hands and feet and throwing objects.

SAFETY INFORMATION

Preparation

- Always wear safety shoes, glasses and long pants when mowing. **DO NOT** wear open shoes or go barefoot when using the mower.
- Carefully inspect the area where the lawn mower will be used and remove any objects that may be thrown or may affect the machine.
- Before use, always visually inspect that the blades, blade assembly and blade lock are not worn or damaged.
- The blades must be balanced to ensure proper operation and to be able to work safely. Replace blades and blade assemblies when they are not in good condition.
- Replace defective mufflers.

WARNING

Petrol is extremely flammable.

- Add fuel before starting. **DO NOT** remove the fuel tank cap while the machine is running or while it is still hot.
- If the fuel has spilled or leaked, **DO NOT** attempt to start the machine. Move the machine away from the spillage area to avoid creating a source of ignition until the fuel vapours have dissipated.
- Only refuel outside and do not smoke during refuelling.
- Store fuel in tanks specifically designed for this purpose.

Operation

- Before mowing, install the grass catcher in its intended position.
- Always operate machine in an open area. Exhaust fumes contain carbon monoxide which can be deadly when inhaled.
- Mow only in daylight or under good artificial light. Always have good visibility when operating the machine.
- Avoid using the machine on wet or slippery grass where possible.
- Always be sure of your footing on uneven or sloped grounds.
- Walk, **NEVER** run.
- When mowing on slopes always mow across slopes, **NEVER** from top to bottom.
- **DO NOT** mow on very steep slopes.
- Exercise extreme caution when changing direction on slopes.
- Stop the blades if the mower is to be tilted when crossing surfaces other than grass, and when transporting the mower the area to be mowed.
- **DO NOT** use the machine near drop-offs, ditches or embankments. If it is really necessary to operate this machine near these locations, use an extreme precaution and be careful about your footing.
- Use extreme caution and be very careful with your footing.
- **NEVER** use the mower with defective guards or without safety devices such as baffles and or without the collection bin in place.
- **DO NOT** change the motor configuration or increase the speed of the lawnmower. Safety systems or features should not be tampered with or disabled.
- Before starting, disengage all blades, make sure the gears are in neutral and the traction control lever is released. Keep feet well away from the blades.
- Before starting the engine, carefully read and understand all instructions.
- **DO NOT** tilt the mower when starting. If the mower needs to be tilted for starting then do not tilt it more than absolutely necessary and lift only the part that is furthest away from the user.
- **DO NOT** start the machine by standing in front of the ejection.

SAFETY INFORMATION

- **DO NOT** place hands or feet near or under rotating parts. Keep the mouth of the grass extractor clean.
- **NEVER** lift or carry the mower while the machine is running.
- Stop the engine and disconnect the spark plug
 - » Before cleaning or unclogging the grass extractor.
 - » Before checking, cleaning, and working on the mower.
 - » After hitting an object, stop engine and inspect the mower for damage and repair before re-using the mower.
 - » If the mower begins to vibrate abnormally, stop the engine immediately and check for damage and repair before re-using the mower.
 - » To remove and empty the grass catcher.
- Stop the engine
 - » Every time you leave the machine.
 - » Before refuelling.
- To stop the engine, reduce the throttle setting, turn off the ignition and release the operator presence grip, close the fuel cock (depending on the machine).
- Move slowly when moving.

Maintenance and Storage

- Check and tighten all bolts and screws to ensure that the machine is in safe operating condition.
- **NEVER** store the mower in an enclosed area with fuel in the tank as vapours store the mower with fuel in the tank, in a building as vapours can cause a spark or flame.
- Allow the machine to cool before storing it in an enclosed area.
- To reduce the risk of fire, keep the machine clean - without grass or grease, ensure the muffler and the engine are cooled, disconnect the battery if necessary and empty the fuel tank.
- Check the condition of the grass catcher frequently for deterioration.
- For safety, replace any worn or damaged parts.
- If the fuel tank is to be drained, it must be done outdoors.
- Switch off the mower and wait until it stops completely. Make sure that all moving parts have come to a complete stop. Park the mower in a safe place.
- Allow the machine to cool before performing inspection, adjustments, maintenance, servicing and storage.

Special Safety Instructions

- To avoid any blockage, accidents or breakdown, always inspect the machine and working area before and after use.
- Stop the engine before emptying the catcher or changing the cutting height.
- While the engine is running, **NEVER** put your hands or feet under the mower or under the grass ejection area.
- If the mower vibrates abnormally, turn off the engine and carefully inspect the mower for damage or loose fittings.
- Regularly check that the bolts, nuts and screws are properly tightened for safe use of the mower.
- Always use hearing protection. Prolonged exposure to noise can cause hearing loss.
- **DO NOT** expose yourself or others to exhaust fumes.

SAFETY INFORMATION

Fuel Handling

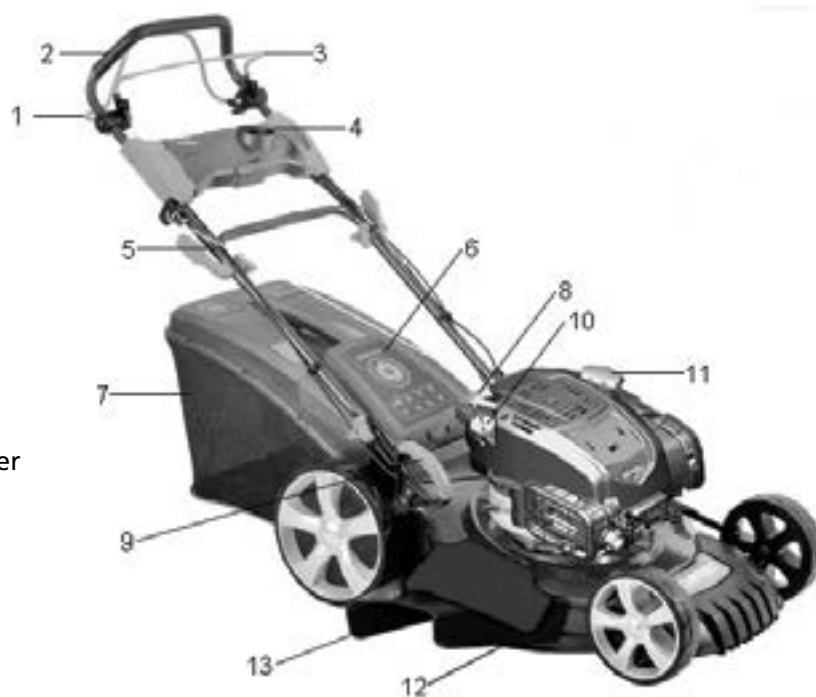
- Use caution when handling fuel, it is flammable and the vapours can be explosive.
- Use only an approved container to carry and store fuel.
- **NEVER** remove the fuel cap or add fuel while the engine is running. Turn off the machine and allow the engine and exhaust components to cool down before refuelling.
- **DO NOT** smoke when refuelling.
- **NEVER** refuel in an enclosed area.
- **NEVER** store the mower or fuel container where there is an open flame, spark or pilot light.
- If any fuel has spilled, wipe it off and move mower away from the spill before starting it.
- Replace and tighten the fuel tank cap after refuelling.
- Follow instructions in this manual for filling the mower with fuel.

Intended Use

- This BBT 21" self-propelled lawn mower is designed for natural grass mowing. Any other use is prohibited.
- This mower is suitable for private use in a garden or plot. It is designed for the maintenance of grassy areas and private lawns and should not be used in public areas, parks, sports, agricultural or forest areas.

PARTS LOCATION

1. Self-propeller bar
2. Upper handle bar
3. Operator control lever
4. Plate
5. Lower bar
6. Flap
7. Grass catcher
8. Recoil starter
9. Cutting height adjustment lever
10. Oil tank
11. Fuel tank
12. Flap of the side discharge
13. Side discharge



ASSEMBLY

A. Lower Handle

- » Place the holes of the lower bar on the support (1).
- » Fix the bar with provided screws and wing nuts (2).



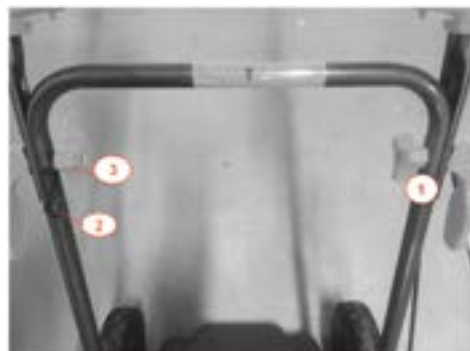
Note: The position of the bar can be adjusted.

- » There are 3 positions (see right picture).
- » Screw the screw and wing nut in the desired position.



B. Upper Handle

- » Place the upper handle on the lower handle.
- » On the left side, place the wing nut and the lock lever. Screw them on in place. The lock lever must be in the same direction as the bar (1).
- » On the right side, install the hook on the wing nut (2). Then install the wing nut and the lock lever and screw them into place. The lock lever must be in the same direction as the bar (3).



C. User Plate

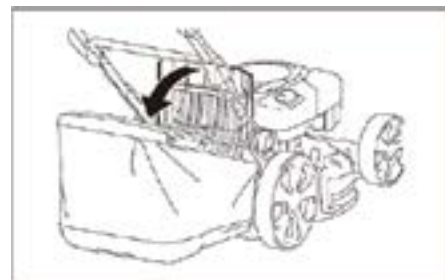
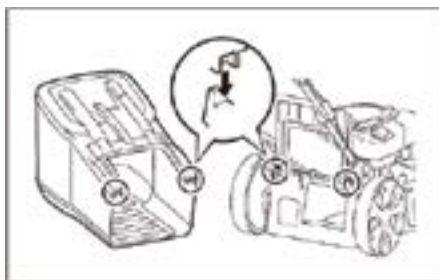
- » Insert the small plate in its dedicated location (both side).
- » Install the user plate. Screw the plate in place with the provided 4 screws provided (the holes are below the user plate).



ASSEMBLY

D. Mounting / Disassembling the Grass Catcher

- » To install: Lift the flap and hook the grass catcher to the back of the mower.
- » To remove it: hold the flap and lift it up, then remove the grass catcher.



E. Side Discharge

- » Push the lock of the flap to lift it up.
- » Hold the flap and place the side discharge.



NOTE: Before installing the side discharge, remove the grass catcher. Both functions cannot be used together at the same time.



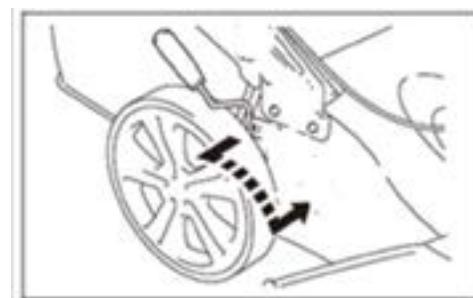
F. Assembly/Disassembly of the Mulching Plug

- » Remove the grass catcher.
- » Place the mulching plug into the rear discharge chute. Make sure that both pins are pressed down into the holes.
- » Release the flap so that it will close back to cover the mulching plug



G. Cutting Height Adjustment

- » Push the lever outward to disengage it from the housing. Move it forwards or backwards to adjust the height.



OIL AND FUEL FILLING

Filling the Fuel Tank

Fuel must meet the following criteria:

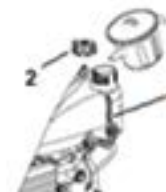
- Always use clean, new, unleaded petrol with a minimum octane rating of 95/98.

⚠ CAUTION

DO NOT use unapproved fuel such as E10. **DO NOT** mix oil with petrol or modify the engine so that it runs on alternative fuels. The use of unapproved fuels will damage the engine parts and will void the warranty.

Filling

- Remove the fuel tank cap.
- Close the fuel tank cap correctly after filling.
- Add fuel to the tank slowly.
- Wipe off any spilled fuel before starting the engine.



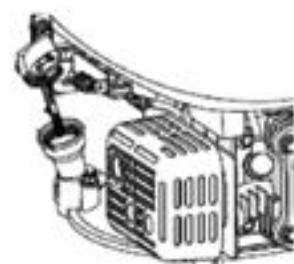
Oil Tank

Recommended Oil

- We recommend the use of high quality oil such as SAE 30 oil.
- **DO NOT** use special additives.

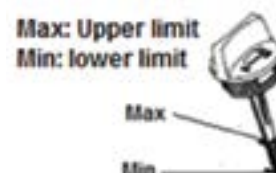
Filling

- Open the oil tank cap.
- Fill the tank with oil to the upper limit level on the dipstick.
- Close the oil tank.



Checking the Oil Level

- Check the oil level with the mower horizontal and the engine switched off and cooled.
- Remove the plug / dipstick from the oil tank and wipe it off.
- Plug / dipstick into the tank neck as shown, without screwing it in, and then remove it to check the oil level.
- If the oil level is near or below the lower limit on the dipstick, remove the plug / dipstick and fill the oil reservoir to the upper limit on the dipstick (bottom edge of the dipstick). **DO NOT** overfill.
- Replace the oil tank plug / dipstick.



⚠ WARNING

Fuel is extremely flammable.

- Store fuel only in cans specifically designed for this purpose.
- Fill the fuel tank only outdoors and before starting the engine. **DO NOT** smoke when filling the fuel tank or handling fuel.
- **NEVER** open the fuel tank cap and never add fuel while the engine is running or when it is hot.
- If fuel is spilled, **DO NOT** start the engine, move the mower away from where the fuel has been spilled, and be careful not to create a spark or flame until the fuel vapours have dissipated.
- Fully close fuel and oil tank correctly.
- Before tilting the mower to maintain the blade or drain the oil, empty the fuel tank.
- **NEVER** fill the fuel tank in an enclosed space or while the engine has cooled down for at least 15 minutes after use.

OPERATION

Before mowing, install the grass catcher in its intended position.

Start the device on safe and flat ground, preferably not in tall grass. Make sure that the cutting tools do not touch objects or the ground.

Starting the Engine

- Pull the operator control lever towards the upper handle bar and hold it together.
- Pull the recoil starter rope.
- If the engine starts, pull back slowly the recoil starter rope.



Stopping the Engine

- Release the operator control lever.
- The engine will stop and the blades will slow down.
- Wait until the blades stop completely before moving or storing.

Self-Propeller Function

- Pull the self-propeller bar towards the handle until it clicks.
- To stop the self-propelled mechanism, release the self-propeller bar.
- To stop the self-propelled mechanism and the machine, release both the operator control lever and self-propeller bar.



NOTE: To stop the self-propelled without turning off the engine, release the operator control lever a little until the self-propelled mechanism disengages. Pull the operator control lever back towards the handle and continue to mow without the self-propelled mechanism.

Work Instructions

- Adjust the cutting height so that the machine is not overworked.
- Drive the machine at moderate speed (walking).
- **DO NOT** mow backwards.
- Always mow across slopes, not up and down.
- If the blades come into contact with a foreign object, immediately turn off the engine. Wait for the blades to stop turning completely and check that the unit has not been damaged. Only resume work if the unit has not been damaged.
- Turn off the mower when taking long breaks during work.
- Turn off the mower and wait for the blades to stop turning completely before moving or carrying the machine.
- Clean your mower after each use as described in the section "Cleaning and Maintenance".

MAINTENANCE & STORAGE

⚠ WARNING

Turn off the engine and remove the spark plug before servicing.

- **NEVER** store the mower with the tank filled with fuel in a closed room where fuel vapours may come into contact with a strong heat source or flame. Allow the engine to cool before storing your mower in its storage area.
- To reduce the risk of fire, clean the mower, especially the engine, muffler and fuel tank. Remove all traces of grass or leaves.
- Check the condition of the grass collection bag frequently. Replace if it is damaged.
- If you need to empty the oil tank, carry out this operation outdoors.
- Wear thick gloves before mounting or sharpening the blade. Make sure the blade is still well balanced.
- Regularly check the oil level and add or replace if necessary.
- Inspect the mower frequently and make sure all grass deposits are removed under the crankcase.
- Check the blade often. For a clean mow, the blade must always be sharpened and well balanced.
- At regular intervals, check that all bolts and screws are tight to keep the mower in a safe operating condition. Worn or loose nuts and bolts can cause severe damage to the engine or crankcase.
- If the blade bangs or rattles violently, stop the mower and service.

Blade

⚠ WARNING

Wear gloves, turn off the engine and remove the spark plug before proceeding.



- The blade is made of hardened steel. For a clean mow, sharpen the blade frequently, approximately every 25 hours of use. Make sure the blade is always well balanced.
- Insert the small iron pin (2 or 3 mm in diameter) into the hole in the middle of the blade - the blade must remain horizontal. If the blade does not remain horizontal, balance it by sharpening it further on the side where it is leaning.
- To remove the blade, loosen the screw, check the blade bracket, and replace all parts if they are worn or damaged.
- To sharpen the blade, place it in a clamp and file the sharp edges evenly, checking the balance of the blade.
- When reassembling the blade, make sure that the cutting edges are in the same direction as the direction of rotation of the motor. The tightening torque of the blade screw should be $3.7 \text{ kg} \cdot \text{m/s}^2$ (37 Nm) and can be checked with a torque wrench.

⚠ WARNING

Use only original spare parts. Poor quality replacement parts can cause serious damage to your mower and affect your safety. Contact our service agent to obtain specifications regarding the correct original spare parts.

MAINTENANCE & STORAGE

Spark Plug

- Check the spark plug after the first five hours of mower use. Thereafter, maintenance of the spark plug should take place every 25 hours.
- Remove the spark plug cap using a rotary motion and then remove the spark plug with the wrench provided.
- Clean off any carbon deposits using a copper brush and check the electrode gap with a feeler gauge.
- Replace and retighten the serviced spark plug and replace the cap.
- If the spark plug is worn or damaged, replace with a new spark plug of the same or suitable type for the engine.

Air Filter

- An air filter in poor condition will reduce the performance and life of the engine while making it harder to start. Regular checks are therefore essential, especially when using the mower in dusty conditions. Check and clean the air filter after every 25 hours of use, or more often if the engine is used in a dusty environment.
- Remove the air box lid and carefully remove the foam filter cartridge. Clean the cartridge in a small bowl of warm water containing a few drops of dishwashing liquid until it is perfectly clean and free from all traces of grease and dust. Rinse the filter cartridge in clean water and then squeeze gently to remove most of the water. Let it air dry until it is completely dry.

WARNING

NEVER clean the foam cartridge in petrol, white spirit or other solvents. These products will degrade the filter cartridge.

- Clean the cover and inside of the air box with a clean lint-free cloth. Apply a uniform layer of oil to the outside of the cartridge filter with a brush (you can use clean engine oil for this). Insert the filter cartridge into its housing and replace the air box lid, ensuring that each component is in place and properly installed. If the filter cartridge is damaged or is very dirty, replace it using a genuine part.
- The maintenance of a foam pre-filter is identical to that of a foam cartridge filter, as described above. The cartridge filter paper should be cleaned with a vacuum cleaner. If it is dirty or contaminated with oil or petrol, replace it.

Adjusting the Transmission Cable

- In its transmission-engaged position, the mower's advance lever is pushed fully towards the handlebar. An incorrectly-adjusted transmission cable can cause premature wear to the mower's drive system.
- If the transmission cable is too tight, it will be difficult to move the advance lever towards the handlebars. Conversely, if the transmission cable is not tight enough, the transmission will function poorly and will lack power.
- To adjust the tension of the transmission cable, increase or reduce the length of the adjustment device using the key. Check the effectiveness of the transmission and the resistance of the lever.
- When the correct adjustment has been reached, secure the adjustment device by tightening the lock nuts.

Storage

- Clean and maintain the mower (as explained above) before storage.
- The mower must be parked and stored in a safe location, out of humidity and away from flammable or dangerous material.
- Store the mower out of reach of children.

SPECIFICATIONS

MODEL	SP-70
Nominal power (kW)	2.8
Engine displacement (cm ³)	163
Maximum rotational speed min ¹	2800
Cutting height (mm)	25-65
Cutting width (mm)	525
Volume of grass catcher (l)	60
Unit mass (kg)	38
Volume of fuel tank (l)	1.0
Volume of oil tank (l)	0.47
Measured sound pressure level	84.1 dB(A) K = 3 dB(A)
Equivalent sound pressure level	89 dB(A) kpA: 3 dB(A)
Measured sound power level	97.54 dB(A) K = dB(A)
Guaranteed sound power level	98 dB(A)
Equivalent vibration value	6 m/s ² K = 1.5 m/s ²

Technical Data is subject to change without notice.

Always wear hearing protection when operating your machine.
There is a risk of hearing loss if no hearing protection is worn.

WARRANTY & SERVICE

Warranties

Bigger Boyz Toyz offer a 1-year parts warranty on all products used for domestic use from the date of purchase. For all commercial use, a 3-month parts warranty period applies, unless specified in the item listing. All conditions below are based upon the product being faulty or not performing as described. In the instance where a return is required, the purchaser is liable for any shipping cost. Warranties will only be determined by a Bigger Boyz Toyz Technician upon inspection.

Warranties do not cover accidents, misuse, neglect, natural disaster or act of God or other external causes, or damage caused by operating the equipment in a manner that is not described in the instructions.

Our products come with guarantees that cannot be excluded under the Australian Consumer Law. You are entitled to a replacement or refund for a major failure and for compensation for any other reasonably foreseeable loss or damage. You are also entitled to have the goods repaired or replaced if the goods fail to be of acceptable quality and the failure does not amount to a major failure.

Parts purchases, consumable components and accessories such as chains, carry bags, batteries, hoses, grinding discs, covers, belts, cable, wheels and blades are not covered by standard warranty.

Spare Parts

Spare parts are available. Please see our website (www.bbta.com.au) or contact us at bbt@bbta.com.au for more details.

EXPLODED DIAGRAM & PARTS LIST

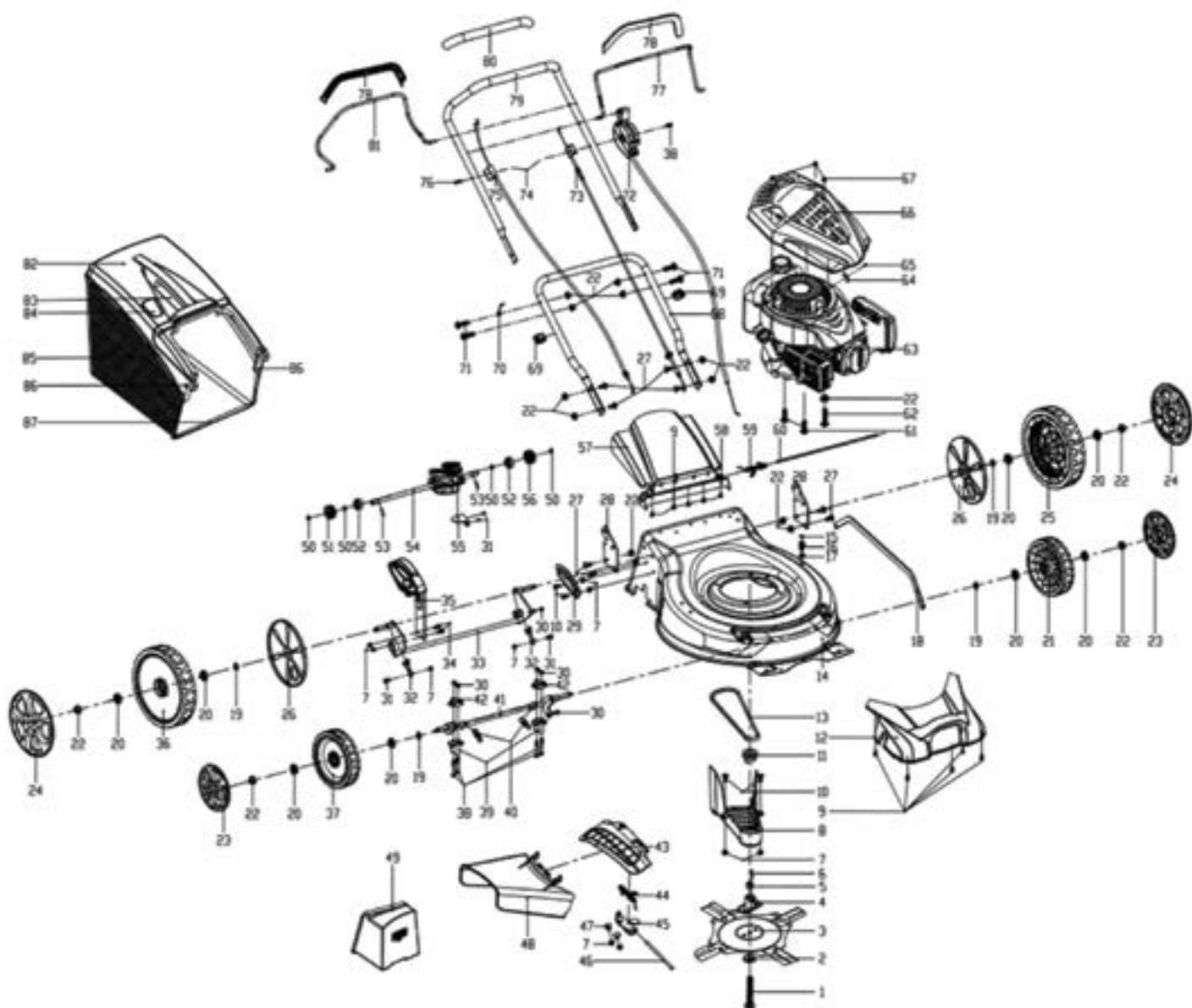
Component Parts Diagram

NO	SKU	DESCRIPTION	QTY
1	SP-SP70-001	Blade bolt	1
2	SP-SP70-002	Butterfly type washer	1
3	SP-SP70-003	Swing blade	1
4	SP-SP70-004	Blade holder	1
5	SP-SP70-005	Washer	1
6	SP-SP70-006	Crankshaft key	1
7	SP-SP70-007	Nut	8
8	SP-SP70-008	Belt cover	1
9	SP-SP70-009	Self-tapping screw	10
10	SP-SP70-010	Square neck bolt	4
11	SP-SP70-011	Driving belt wheel	1
12	SP-SP70-012	Self-propelled assembly	1
13	SP-SP70-013	Belt	1
14	SP-SP70-014	Deck	1
15	SP-SP70-015	O-ring	1
16	SP-SP70-016	Bracket of front wheel axle	1
17	SP-SP70-017	Nut	1
18	SP-SP70-018	Collection rod	1
19	SP-SP70-019	Washer	4
20	SP-SP70-020	Bearing	8
21	SP-SP70-021	7.5" wheel(L)	1
22	SP-SP70-022	Nut	17
23	SP-SP70-023	7.5" wheel cover	2
24	SP-SP70-024	10.5" wheel cover	2
25	SP-SP70-025	10.5" wheel(L)	1
26	SP-SP70-026	Inner wheel cover	2
27	SP-SP70-027	Square neck bolt	8
28	SP-SP70-028	Left handle rail bracket	2
29	SP-SP70-029	Adjustment height board	1
30	SP-SP70-030	Nut	6
31	SP-SP70-031	Hexagon flange bolts	4
32	SP-SP70-032	Fixed plate	2
33	SP-SP70-033	Rear wheel axle	1
34	SP-SP70-034	Hexagon flange bolts	4
35	SP-SP70-035	Self-propelled assembly	1
36	SP-SP70-036	10.5" wheel(R)	1
37	SP-SP70-037	7.5" wheel(R)	1
38	SP-SP70-038	Hexagon flange bolts	5
39	SP-SP70-039	Bracket of front wheel axle	2
40	SP-SP70-040	Draw spring	2
41	SP-SP70-041	Front axle	1
42	SP-SP70-042	Bracket of front wheel axle	2
43	SP-SP70-043	Seal board	1
44	SP-SP70-044	Torsional spring	1

NO	SKU	DESCRIPTION	QTY
45	SP-SP70-045	Bracket	1
46	SP-SP70-046	Round rod	1
47	SP-SP70-047	Square neck bolt	2
48	SP-SP70-048	Side discharge	1
49	SP-SP70-049	Plug	1
50	SP-SP70-050	Shaft ring	4
51	SP-SP70-051	Gear assembly	1
52	SP-SP70-052	Bearing (R8RS)	2
53	SP-SP70-053	Pin	2
54	SP-SP70-054	Self-propelled assembly	1
55	SP-SP70-055	Plate	1
56	SP-SP70-056	Gear assembly	1
57	SP-SP70-057	Rear discharge cover	1
58	SP-SP70-058	Dust-proof board	1
59	SP-SP70-059	Torsional spring	1
60	SP-SP70-060	Round rod	1
61	SP-SP70-061	Hexagon flange bolts	2
62	SP-SP70-062	Hexagon flange bolts	1
63	SP-SP70-063	Engine	1
64	SP-SP70-064	Plate	1
65	SP-SP70-065	Cross recessed pan head screw	1
66	SP-SP70-066	Plastic cover	1
67	SP-SP70-067	Nut	2
68	SP-SP70-068	Lower handrail	1
69	SP-SP70-069	Cable clip	2
70	SP-SP70-070	Hook	1
71	SP-SP70-071	Hexagon flange bolts	4
72	SP-SP70-072	Throttle control cable assembly	1
73	SP-SP70-073	Driving cable assembly	1
74	SP-SP70-074	Nut	2
75	SP-SP70-075	Brake cable assembly	1
76	SP-SP70-076	Hexagon flange bolts	1
77	SP-SP70-077	Brake lever	1
78	SP-SP70-078	Axle sleeve	2
79	SP-SP70-079	Upper handrail	1
80	SP-SP70-080	Cable tube	1
81	SP-SP70-081	Driving rod	1
82	SP-SP70-082	Top cover of grass bag	1
83	SP-SP70-083	Cover	1
84	SP-SP70-084	Indicator	1
85	SP-SP70-085	Half plastic box	1
86	SP-SP70-086	Self-tapping screw	2
87	SP-SP70-087	Collection bag frame	1

NOTE: Due to continuous product improvement, we reserve the right to change the product without prior notice.

EXPLODED DIAGRAM & PARTS LIST



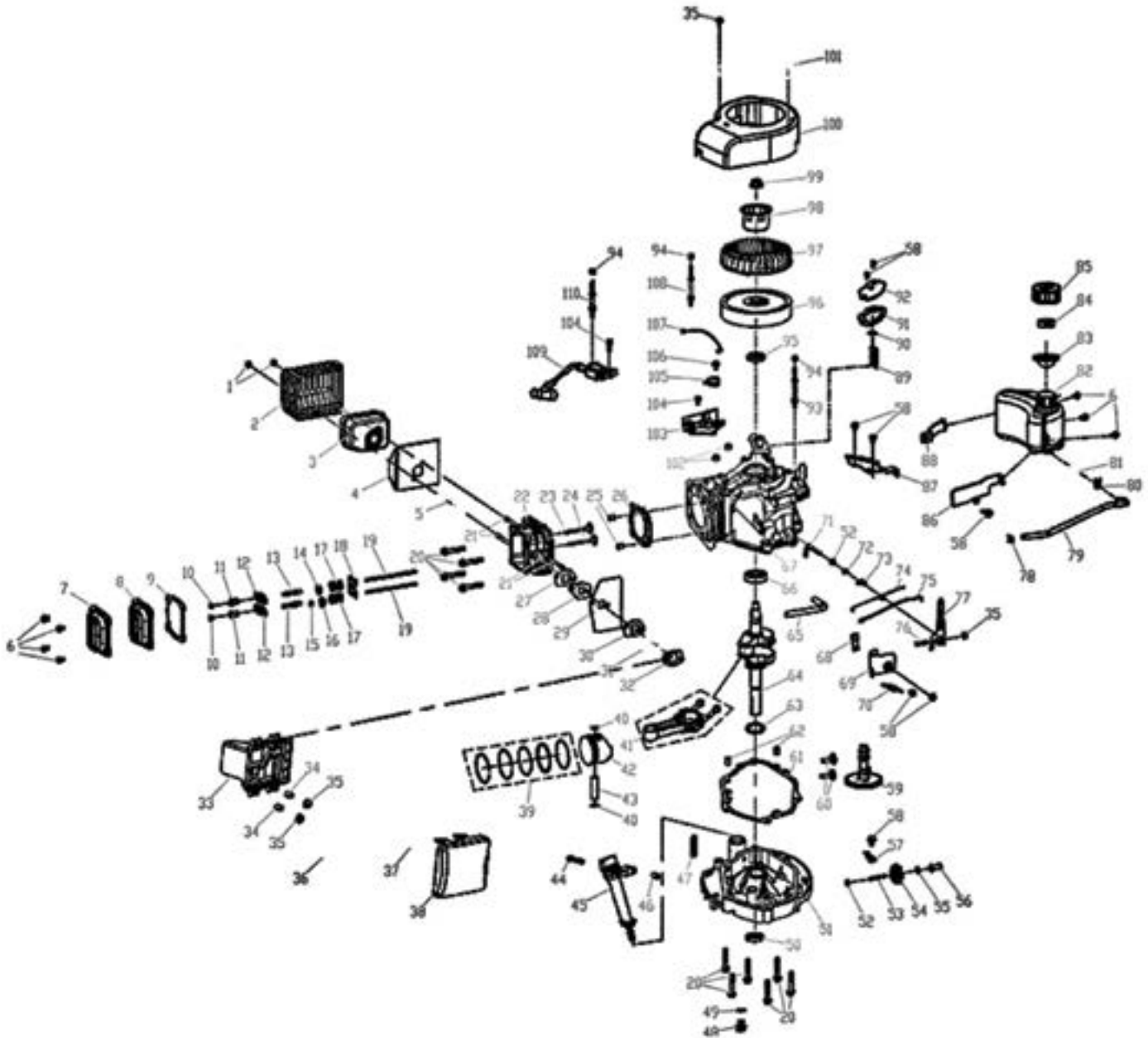
EXPLODED DIAGRAM & PARTS LIST

Engine Parts Diagram

NO	SKU	DESCRIPTION
1	SP-SP70ENG -001	Nut
2	SP-SP70 ENG-002	Muffler cover
3	SP-SP70ENG -003	Muffler assembly
4	SP-SP70ENG -004	Heat insulation gasket of muffler
5	SP-SP70ENG -005	Spark plug
6	SP-SP70ENG -006	Hexagon flange bolts
7	SP-SP70ENG -007	Scald-proof cover
8	SP-SP70 ENG-008	Cylinder head cover
9	SP-SP70ENG -009	Gasket of cylinder cover
10	SP-SP70 ENG-010	Nut
11	SP-SP70ENG-011	Nut
12	SP-SP70ENG-012	Valve rocker
13	SP-SP70 ENG-013	Adjustment bolt
14	SP-SP70 ENG-014	Spring socket
15	SP-SP70 ENG-015	Hood
16	SP-SP70 ENG-016	Valve spring keepers
17	SP-SP70 ENG-017	Spring
18	SP-SP70 ENG-018	Push rod assembly
19	SP-SP70 ENG-019	Push rod assembly
20	SP-SP70 ENG-020	Hexagon flange bolts
21	SP-SP70 ENG-021	Double head bolt
22	SP-SP70 ENG-022	Cylinder head
23	SP-SP70 ENG-023	Intake valve
24	SP-SP70 ENG-024	Exhaust valve
25	SP-SP70 ENG-025	Pin
26	SP-SP70 ENG-026	Gasket of cylinder head
27	SP-SP70 ENG-027	Gasket I of air inlet pipe
28	SP-SP70 ENG-028	Air inlet pipe
29	SP-SP70 ENG-029	Carburettor insulation pad
30	SP-SP70 ENG-030	Gasket of air filter
31	SP-SP70 ENG-031	Carburettor assembly
32	SP-SP70 ENG-032	Gasket of air filter
33	SP-SP70 ENG-033	Bracket of air filter
34	SP-SP70 ENG-034	Air director bush
35	SP-SP70 ENG-035	Nut
36	SP-SP70 ENG-036	Paper filter element assembly
37	SP-SP70 ENG-037	Foam filter element
38	SP-SP70 ENG-038	Upper cover
39	SP-SP70 ENG-039	Piston ring
40	SP-SP70 ENG-0340	Jump ring
41	SP-SP70 ENG-041	Connect rod assembly
42	SP-SP70 ENG-042	Piston
43	SP-SP70 ENG-043	Pin
44	SP-SP70 ENG-044	Hexagon flange bolts
45	SP-SP70 ENG-045	Oil ruler assembly
46	SP-SP70 ENG-046	Refuelling device spacer
47	SP-SP70 ENG-047	Rubber washer
48	SP-SP70 ENG-048	Bolt
49	SP-SP70 ENG-049	Washer
50	SP-SP70 ENG-050	Oil seal
51	SP-SP70-ENG-051	Box cover
52	SP-SP70 ENG-052	Washer
53	SP-SP70 ENG-053	Gear shaft
54	SP-SP70 ENG-054	Speed regulator gear assembly
55	SP-SP70 ENG-055	Washer

NO	SKU	DESCRIPTION
56	SP-SP70 ENG-056	Sleeve
57	SP-SP70 ENG-057	Pressing plate
58	SP-SP70 ENG-058	Hexagon flange bolts
59	SP-SP70 ENG-059	Camshaft
60	SP-SP70 ENG-060	Pin
61	SP-SP70 ENG-061	Gasket of cylinder
62	SP-SP70 ENG-062	Pin
63	SP-SP70 ENG-063	Washer
64	SP-SP70 ENG-064	Crankshaft assembly
65	SP-SP70 ENG-065	Freather pipe
66	SP-SP70 ENG-066	Roller bearing
67	SP-SP70 ENG-067	Crankcase
68	SP-SP70 ENG-068	Fixed clip
69	SP-SP70 ENG-069	Fixed plate
70	SP-SP70 ENG-070	Draw spring
71	SP-SP70 ENG-071	Speed regulator rod
72	SP-SP70 ENG-072	Oil seal
73	SP-SP70 ENG-073	Split pin
74	SP-SP70 ENG-074	Draw spring
75	SP-SP70 ENG-075	Handspike of valve
76	SP-SP70 ENG-076	Screw
77	SP-SP70 ENG-077	Speed regulator rocker
78	SP-SP70 ENG-078	Twisting clip B
79	SP-SP70 ENG-079	Fuel inlet pipe
80	SP-SP70 ENG-080	Twisting clip A
81	SP-SP70 ENG-081	Fuel filter net
82	SP-SP70 ENG-082	Fuel tank
83	SP-SP70 ENG-083	Seal gasket of fuel tank cap
84	SP-SP70 ENG-084	Foam
85	SP-SP70 ENG-085	Fuel tank cap
86	SP-SP70 ENG-086	Fuel tank bracket (left)
87	SP-SP70 ENG-087	Tank bracket
88	SP-SP70 ENG-088	Fuel tank bracket (right)
89	SP-SP70 ENG-089	Filter net
90	SP-SP70 ENG-090	Valve element
91	SP-SP70 ENG-091	Gasket of respirator
92	SP-SP70 ENG-092	Respirator cover plate
93	SP-SP70 ENG-093	Double head bolt
94	SP-SP70 ENG-094	Air director bush
95	SP-SP70 ENG-095	Oil seal
96	SP-SP70 ENG-096	Flying wheel
97	SP-SP70 ENG-097	Fan
98	SP-SP70 ENG-098	Drived disk
99	SP-SP70 ENG-099	Nut
100	SP-SP70 ENG-100	Wind scooper
101	SP-SP70 ENG-101	Start assembly
102	SP-SP70 ENG-102	Governor bush
103	SP-SP70 ENG-103	Detent
104	SP-SP70 ENG-104	Hexagon flange bolts
105	SP-SP70 ENG-105	Ignition switch assembly
106	SP-SP70 ENG-106	Hexagon flange bolts
107	SP-SP70 ENG-107	Flameout line assembly
108	SP-SP70 ENG-108	Air director bush III
109	SP-SP70 ENG-109	Ignition assembly
110	SP-SP70 ENG-110	Double head bolt

EXPLODED DIAGRAM & PARTS LIST



YOU MAY ALSO LIKE



Chainsaws



Cultivators / Tillers



Mulchers / Chippers



Log Splitters

Enquiry or problems with our products?

CALL US (02) 4257 4787



www.bbta.com.au