

OWNER'S MANUAL

Assembly & Operating Instructions

BBT 51CC Post Hole Digger

MODEL NO. BBT-PHD-51CC



N23701



To The Owner

Thank you for purchasing our Post Hole Digger. It was carefully engineered to provide excellent performance when properly operated and maintained.

Please read this entire manual prior to operating the Post Hole Digger. It instructs you how to safely and easily set up, operate and maintain your Post Hole Digger. Please be sure that you, and any other persons who will operate the Post Hole Digger, carefully follow the recommended safety practices at all times. Failure to do so could result in personal injury or property damage.

All information in this manual is relative to the most recent product information available at the time of printing. Review this manual frequently to familiarise yourself with the machine, its features and operation. Please be aware that this Owner's Manual may cover a range of product specifications for various models. Characteristics and features discussed and/or illustrated in this manual may not be applicable to all models. We reserve the right to change product specifications, designs and equipment without notice and without incurring obligation.

All the power testing information used to establish the power rating of the engine equipped on this Post Hole Digger can be found in the engine manufacturer's manual or website. If you have any problems or questions concerning the machine, please contact our Customer Support Department.

Throughout this manual, all references to right and left side of the Post Hole Digger are observed from the operating position. The engine manufacturer is responsible for all engine-related issues with regards to performance, power-rating, specifications, warranty and service.

Customer Support

Please do NOT return the Post Hole Digger without first contacting the Customer Support Department at bbt@bbta.com.au.

If you have difficulty assembling this product or have any questions regarding the controls, operation, or maintenance of this Post Hole Digger, please contact our Customer Support Department.

SAVE THESE INSTRUCTIONS

TABLE OF CONTENTS

	Page(s)
To The Owner	2
Customer Support	2
TABLE OF CONTENTS	3
IMPORTANT SAFETY INFORMATION	4-7
Additional Information and Potential Changes.....	4
Key to Symbols.....	5
Engine Safety Precautions.....	7
Burns and Fires.....	7
PARTS LOCATION.....	8
ASSEMBLING	8
OPERATION	9-11
Preparing Engine for Starting	9
Normal Operation.....	10
Starting and Stopping Engine.....	10
SPECIFICATIONS.....	11
MAINTENANCE	12-13
Engine Maintenance.....	12
Auger Maintenance	12
Transporting Your Earth Auger.....	12
Long Term Storage.....	13
SERVICE, TROUBLESHOOTING AND REPAIR	14
Service.....	14
Troubleshooting.....	14
WARRANTY & SERVICE	15
EXPLODED DIAGRAM & PARTS LIST.....	16-17
YOU MAY ALSO LIKE	18



IMPORTANT SAFETY INFORMATION



WARNING: Read and thoroughly understand all instructions in this manual and on the safety decals before assembling or operating this Post Hole Digger. Failure to do so may cause serious injury or death. Do not allow anyone to operate this Post Hole Digger who has not read this manual. As with all power equipment, a Post Hole Digger can be dangerous if assembled or used improperly. Do not operate this Post Hole Digger if you have any questions concerning its safe operation. To get answers to any questions, call our Customer Support Department.



This SAFETY ALERT SYMBOL identifies important safety messages in this manual. Failure to follow this important safety information may result in serious injury or death.



DANGER! This Post Hole Digger was built to be operated according to the safe operation practices in this manual. As with any type of power equipment, carelessness or error on the part of the operator can result in serious injury. This Post Hole Digger is capable of amputating hands and feet and throwing debris. Failure to observe the following safety instructions could result in serious injury or death.

The following signals, words and meanings are intended to explain the levels of risk associated with this product.



DANGER indicates a hazardous situation which, if not avoided, will result in serious injury or death.



WARNING indicates a hazardous situation which, if not avoided, could result in serious injury or death.



CAUTION indicates a hazardous situation which, if not avoided, could result in minor or moderate injury.

NOTE

NOTE is important information about the proper use of your Post Hole Digger. Failure to follow this instruction could result in damage to your Post Hole Digger or property.

Additional Information and Potential Changes

We reserve the right to discontinue, change, and improve our products at any time without notice or obligation to the purchaser. The descriptions and sections contained in this manual were in effect at the time of printing. Equipment described within this manual may be optional. Some illustrations may not be applicable to your machine.



IMPORTANT SAFETY INFORMATION

Key to Symbols

Symbol	Description
	READ THE OWNER'S MANUAL(S) Read, understand and follow all instructions in the manual(s) before attempting to assemble and operate.
	FACE PROTECTION Always wear safety goggles or safety glasses with side shields, or a face shield when operating this product as well as ear protection.
	WEAR GLOVES Always wear non-slip, heavy-duty protective gloves when operating this product.
	WEAR SAFETY FOOTWEAR Always wear non-slip steel-toed safety footwear when operating this product.
	BEWARE OF FLYING OBJECTS Danger of eye injury. Wear safety glasses.
	BYSTANDERS Keep bystanders, helpers and children at least 15 metres away.
	NO FIRE No unprotected source of flame, no smoking.
	BEWARE OF HAZARDOUS GASES Never run an engine indoors or in a poorly ventilated area. Engine exhaust contains carbon monoxide.
	Protect the equipment from rain and damp.
	Take care of mechanical hazards.

WARNING! Your Responsibility—Restrict the use of this power machine to persons who read, understand and follow the warnings and instructions in this manual and on the machine.

SAVE THESE INSTRUCTIONS!



IMPORTANT SAFETY INFORMATION

WARNING

PLEASE READ THIS SECTION CAREFULLY. Operate the auger according to the safety instructions and recommendations outlined here and inserted throughout this manual. Anyone who uses this auger must read the instructions and be familiar with the controls.



This symbol points out important safety instructions which, if not followed, could endanger your personal safety. Read and follow all instructions in this manual before attempting to operate this equipment.

- **Do not** carry the auger powerhead between holes with the engine running.
- The auger should not rotate when the engine is idling.
- Always keep hands, feet, hair and loose clothing away from any moving parts on the engine and auger.
- **Do not** allow children to operate this power auger. Do not allow adults to operate the auger without proper instruction.
- **Do not** operate any power equipment under the influence of alcohol, drugs or medication.
- Ensure all screws, nuts and bolts are tight.
- Ensure engine is turned off, cooled and spark plug wire is removed from spark plug before any repairs are attempted.
- Temperature of muffler and nearby areas may be hot. Avoid touching these areas.
- **Never** run engine indoors or in an enclosed area. Engine exhaust contains carbon monoxide, an odourless and deadly gas.
- If the auger will not turn in the hole, turn engine off and allow to cool before attempting to remove it manually.
- **Do not** let persons who do not fully understand the manual thoroughly to operate the auger.
- When operating the auger make sure to keep bystanders a minimum of 15 metres away.



IMPORTANT SAFETY INFORMATION

Engine Safety Precautions

Warning Carbon Monoxide Poisoning

All engines contain carbon monoxide in their exhaust. Carbon monoxide is a deadly, colourless, tasteless, odourless gas which may be present even if you do not smell or see any engine exhaust. Levels of carbon monoxide, which can be deadly, can be present for days in an enclosed area that has poor ventilation. Any level of carbon monoxide, if inhaled, can cause headaches, drowsiness, nausea, dizziness, confusion and eventually death. **If you experience any of these symptoms, seek fresh air and medical attention immediately.**

Preventing Carbon Monoxide Poisoning

- **Never** run engine indoors.
- Carbon monoxide can reach dangerous levels very quickly.
- **Never** run engine outdoors where exhaust fumes may be pulled into a building.
- **Never** run engine outdoors in a poorly ventilated area where the exhaust fumes may be trapped and not easily taken away. (Examples include: in a large hole or areas where hills surround your working area.)
- **Never** run engine in an enclosed or partially enclosed area. (Examples include: buildings that are enclosed on one or more sides, under tents, carports or basements.)
- Always run the engine with the exhaust and muffler pointed in the direction away from the operator.
- **Never** point the exhaust muffler towards anyone. People should always remain a safe distance away from the operation of the engine and its attachments.

Petrol Fires and Handling Fuel Safely

Fuel and fuel vapours are highly flammable. Never use fuel where a spark or flame may be present. Never use fuel where a potential source of ignition could occur. (Examples include: hot water systems, clothes dryer or electric motors, etc.)

Keep flames and sparks away from engine and fuel to prevent fires. Fuel fires spread very quickly and are highly explosive.

Prevention of Petrol Fires

- **Never** fill your fuel tank with fuel indoors. (Examples include: garage, shed, house, porch, etc.)
- Always fill fuel tank outside in a well ventilated area.
- **Never** remove the fuel cap or add fuel with the engine running. Stop engine and allow to cool before filling.
- **Never** drain fuel from engine in an enclosed area.
- Always wipe up excess (spilled) fuel from engine before starting. Clean up spilled fuel immediately.
- Allow spilled fuel to dry, after wiping and before starting.
- Allow fuel fumes/vapours to escape from the area before starting engine.
- Test the fuel cap for proper installation before starting and using engine.

- Always run the engine with fuel cap properly installed on the engine.
- Replace fuel cap if it allows fuel to spill or leak.
- **Never** smoke while refilling engine fuel tank.
- Prevent fire and explosion caused by static electric discharge. Use only non-metal, portable approved fuel containers.
- **Do not** store engine with fuel in fuel tank indoors. Fuel and fuel vapours are highly explosive.
- When storing, screw down fuel cap vent tightly.
- **Never** pour fuel from engine fuel tank.
- **Never** siphon fuel by mouth to drain fuel tank.
- Always have an adult fill the fuel tank.
- **Never** allow an adult or anyone under the influence of drugs or alcohol to fill engine.
- **Never** allow children to fill the engine.

Burns and Fires

The muffler, muffler guard and other parts of the engine become extremely hot during the operation of the engine. These parts remain extremely hot even after the engine has stopped.

Prevention of Burns and Fires

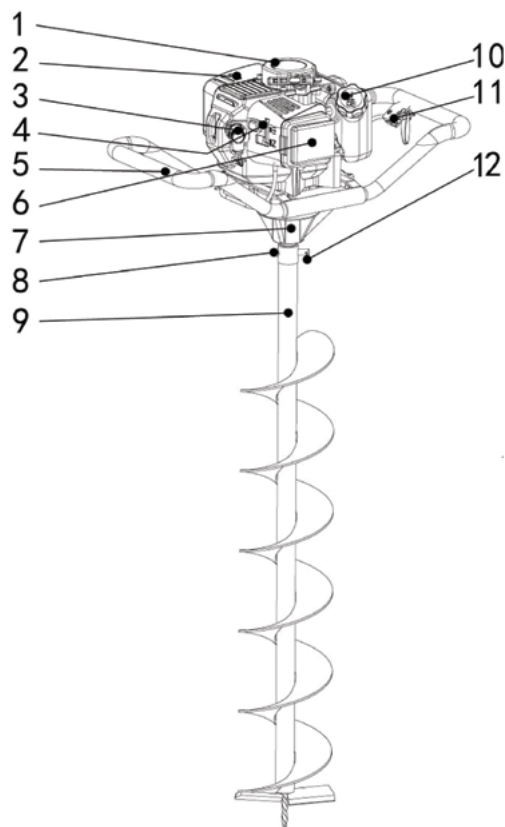
- **Never** remove the muffler guard from the engine.
- **Never** touch the muffler guard as it is extremely hot and will cause severe burns.
- **Never** touch parts of the engine that become hot after operation.
- Always keep materials and debris away from muffler guard and other hot parts of the engine to avoid fires.

CAUTION

Hot gases are a normal by-product of a functioning catalytic converter. Follow all safety instructions to prevent burns and fires.

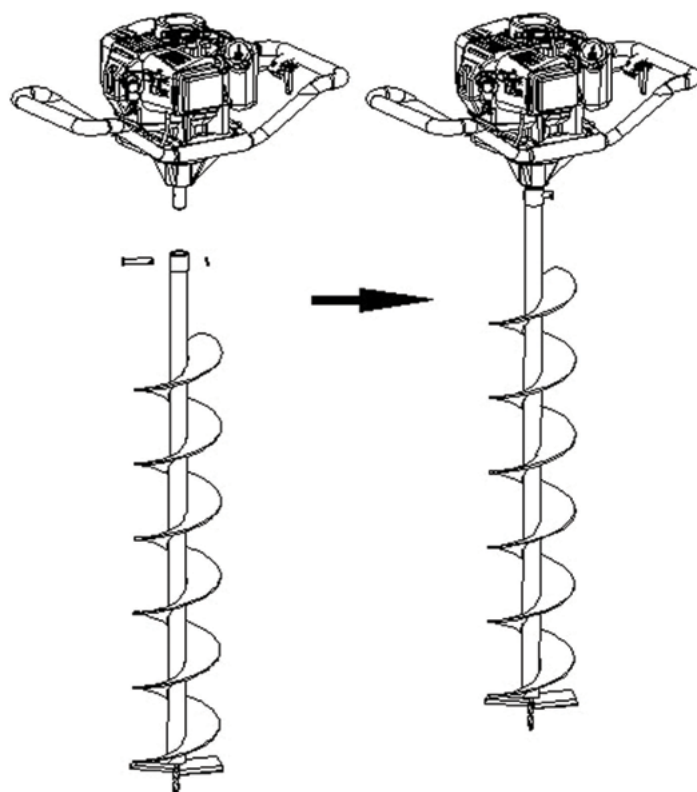
PARTS LOCATION

1. Recoil starter
2. Muffler
3. Spark plug
4. Choke lever
5. Handle
6. Air filter
7. Transmission complete
8. Pin shaft
9. Auger
10. Fuel tank cap
11. Assembly Trigger
12. Cotter pin



ASSEMBLING

Set the auger on the output shaft, then insert the pin shaft, then lock it with cotter pin.



OPERATION

Preparing Engine for Starting

Fuel and Oil

Quality

To operate the engine, we recommend using 2 stroke fuel and oil mix to ensure that the engine operates correctly throughout the life of the engine.

Use unleaded regular 95 or 98 grade petrol only.

Mixture

Run earth auger with a 25:1 ratio

FUEL	2 STROKE OIL	RATIO
2.5 litres	100ml	25:1
5 litres	200ml	25:1

Mixing Fuel and Filling Fuel Tank

Mixing Fuel

1. Fuel must be mixed in a container outside in a well ventilated area.
2. Fill certified fuel container 1/4 full of recommended fuel.
3. Add recommended amount of 2 stroke oil.
4. Screw container cap on straight and tight.
5. Shake the container to mix fuel and oil.
6. Unscrew fuel cap slowly to vent, add the remainder of fuel requirements.
7. Wipe away any spilled fuel or oil and allow to evaporate before moving or transporting.

CAUTION

Do not alter/modify engine or auger.

Avoid injury! Never alter or modify the engine from the factory. Serious injury or death may occur if engine is modified or altered.

Avoid injury! When working on, or replacing parts for the engine or auger you must always disconnect spark plug wire from the spark plug and keep it away from the spark plug.

Avoid injury! Always wear hearing protection while operating engine.


Avoid injury! Please do not start your auger until you have read the previous section of this manual. If you have read these and follow the steps below to start your auger.

Avoid injury! Never store engine with fuel in the tank indoors. Fuel and fuel vapours are highly flammable.

Avoid injury! Never mix fuel and oil directly in engine fuel tank. Use only non-metal, portable approved fuel containers.

Avoid injury! An adult must always handle and fill the engine with fuel.

Avoid injury! Always handle fuel in a well ventilated area, outdoors, away from flames or sparks.

 **IMPORTANT:** this engine uses a fuel/oil mixture. Do not run on straight fuel only, as this will cause engine damage.

Filling Fuel Tank

1. Shut-off engine and allow engine to completely cool before refilling the fuel tank.
2. Move to a well ventilated area, outdoors, away from flames and sparks.
3. Clean debris from area around the fuel cap.
4. Loosen fuel cap slowly. Place the cap on a clean, dry surface.
5. Carefully add fuel without spilling.
6. **Do not** fill fuel tank completely full, allow space for fuel to expand.
7. Immediately replace fuel cap and tighten. Wipe off spilled fuel and allow to dry before starting engine.

OPERATION

Normal Operation

1. The clutch will transfer maximum power after about two hours of normal operation. During this break-in period clutch slippage may occur. The clutch should be kept free of oil or other moisture for efficient operation.
2. Drill holes without placing excessive body weight on the unit. The auger operates most efficiently with a shaving action caused by the weight of the unit itself.
3. Never run engine indoors. Exhaust fumes are deadly.
4. Do not use an earth auger in ice.
5. To attach auger to powerhead, align hole at top of auger shaft with the output shaft hole. Insert 3/8-16 x 1-1/2" bolt and secure bolt with provided 3/8" bi-way lock nut using a wrench.

NOTE: The ends of the bolt should be flush with the auger collar. Bolt head and thread end should never go beyond earth collar.

Using the Screw Type, Manual Venting Fuel Cap

1. Your auger is equipped with a screw type, manual venting fuel cap.
2. Before starting the engine, turn the screw in the top of the fuel cap all the way open (anti-clockwise) to its venting position. To ensure that fuel will not spill during use, check that the fuel cap is screwed on tightly and the fuel cap screw is in the venting position.
3. After using the auger and before putting away or transporting it in a vehicle, screw the fuel cap screw on (clockwise) tightly. This will prevent fuel from leaking during storage. The fuel cap will not leak fuel during storage if the cap is tight and the screw at the top is tight.

NOTE: When storing, place unit in an upright position. If storing for prolonged periods of time in warm weather, vent fuel cap to prevent fuel from leaking from carburettor.

CAUTION

Avoid injury! Always handle fuel in a well ventilated area, outdoors, away from flames or sparks.

Avoid injury! Do not start engine if fuel is spilled. Wipe off excess fuel and allow to dry. Remove engine from area to avoid sparks.

Starting and Stopping Engine

- Move engine to a well ventilated area, outdoors, to prevent carbon monoxide poisoning.
- Move to an area away from flames or sparks, to avoid ignition of vapours if present.
- Remove all debris from air cleaner holes and fuel cap to ensure proper air flow.

Cold Engine Start

Starting engine for first time, or after engine has cooled off, or after running out of fuel.

1. Open fuel cap vent screw all the way (anti-clockwise).
2. Move choke lever to RUN or OFF position.

NOTE: Choke must be in the RUN or OFF position when pushing or using the primer bulb.

3. Prime unit until primer hose is filled with fuel.

NOTE: When using the primer bulb, allow the bulb to return completely to its original position between pushes.

4. Move choke lever to CHOKE or ON position.

NOTE: CHOKE position is defined by moving the choke lever as far to the ON position as possible.

5. Push rocker switch to the ON position.
6. Squeeze throttle control wide open with right hand. Grasp starter handle with left hand and pull out slowly, until it pulls slightly harder. Without letting starter handle retract, pull rope with a rapid full arm stroke. Let it return to its original position very slowly until unit fires or runs. Repeat this step every time the starter rope is pulled.

NOTE: If engine fails to start after 5-6 pulls, push primer one time and pull starter rope again.

7. After onengine starts running, move choke lever to HALF CHOKE position until unit runs smoothly.

NOTE: HALF CHOKE is defined when the choke lever is between CHOKE and RUN or ON and OFF.

8. Move choke lever to RUN or OFF position and move throttle to desired speed.

NOTE: Run at full throttle when possible. Do not let unit idle for extended periods of time.

9. To stop engine, push rocker switch to OFF position.

OPERATION

Warm Engine Start

1. Open fuel cap vent screw all the way (anti-clockwise).
2. Move choke lever to CHOKE or ON position.

NOTE: CHOKE position is defined by moving the choke lever as far to the ON position as possible.

3. Continue with Step 5 of Cold Engine Starting.

CAUTION

Avoid injury! Always handle fuel in a well ventilated area, outdoors, away from flames or sparks.

Avoid injury! Do not start engine if fuel is spilled. Wipe off excess fuel and allow to dry. Remove engine from area to avoid sparks.

Avoid injury! If auger is mounted to engine, all safety guards must be securely on to avoid serious injury.

Avoid injury! Starter rope can cause an unanticipated jerk towards engine. Please follow instructions to avoid injury.

Avoid injury! Never leave engine running while unattended. Turn off after every use.

Avoid injury! Never carry powerhead and auger between holes while engine is running.

WARNING

Avoid injury! Make sure the unit is in a stable position before pulling the starter handle.

Avoid injury! When the unit starts to fire or run, release the throttle control momentarily with your right hand and return your left hand to the handlebar position to maintain control and stability of the unit with both hands.

Hot Engine Start

1. Open fuel cap vent screw all the way (anti-clockwise).
2. Continue with Step 5 of Cold Engine Starting.
3. If engine does not fire, refer to Step 2 of Warm Engine Starting.

DO NOT attempt to start engine in the following ways:

- **DO NOT** use starting fluid.
- **DO NOT** spray flammable liquids or vapours into air filter, carburettor or spark plug chamber.
- **DO NOT** remove spark plug and pull on starter rope. Flammable fuel can spray out & ignite from a spark from spark plug.

SPECIFICATIONS

Model	XYEA44
Engine Model	XY1E44F
Engine Type	Forced Air-cooled 2- Stroke
Displacement	51cc
Max. Output	1.4kW
Fuel	Fuel and Oil Mixture(25:1)
Fuel Tank Capacity	0.8 L
Ignition System	C.D.I.
Starting System	Recoil
Gear Ratio	30:1
Max. Engine Speed	8500 r/min
Clutch Engine Speed	3700 r/min
Idle Engine Speed	2900 r/min
Auger Speed	0-280 r/min
Spark plug type /model	BM6A

Specifications subject to change without prior notice.

MAINTENANCE

Auger Maintenance

1. The gear case has grease installed at the factory. It is recommended that once a year, the gear case be split and the grease level checked. Add grease only if level of grease is below top of the gears.

DO NOT OVERFILL.

2. Keep all screws, nuts, and bolts tight.
3. For cold weather operation, store the unit in a cool environment. Transferring the unit from a warm place to a cold place can cause a build up of harmful condensation.
4. If blade performance decreases, turn unit off and disconnect spark plug wire. Carefully inspect cutting edge of the blade for any signs of wear. If blades show any of these signs, they need to be sharpened or replaced.

CAUTION

To prevent accidental starting:

Avoid injury! Temperature of muffler and nearby areas may exceed 65°C, avoid these areas.

Avoid injury! Check auger often for loose nuts and bolts. Keep these items tightened.

Avoid injury! Never store engine with fuel in the tank inside a building. Potential sparks may ignite fuel or fuel vapours.

Avoid injury! An adult must always do maintenance and repair on engine and auger.

Avoid injury! Engine must be shut-off, cool, and spark plug wire removed before any repair or maintenance can be done.

Engine Maintenance

Cooling Fins

Cooling fins, air inlets and linkages must be free from any debris before each use.

Air Filter

Never run engine without air filter properly installed. Added wear and engine failure may occur if air filter is not installed. Service air filter every 3 months or after 20 hours of operation. **Clean filter daily in extremely dusty conditions.**

Steps for Cleaning Air Filter

1. Wash in warm water with mild soap until dirt and debris are removed. Press filter when washing, do not twist.
2. Rinse in warm water until soap and dirt are removed.
3. Dry filter by wrapping in a clean cloth and pressing filter until it is dry.
4. Apply oil to the entire filter.
5. Remove excess oil.
6. Attach the filter and air cleaner cover to the engine.

Spark Plug

The recommended spark plug is a NGK BM6A which cross references to a Champion CJ8.

1. Check spark plug after every 50 hours of operation.
2. Disconnect the spark plug cap, and clean any debris from around the spark plug area.
3. Remove spark plug and replace if any of the following occur; pitted electrodes, burned electrodes, cracked porcelain, or deposits around electrodes.
4. After analysis, seat spark plug and tighten with spark plug wrench.
 - Reinstall original spark plug, tighten additional 1/2 turn.
 - Installing new spark plug, adjust spark plug gap to .030" and tighten additional 1/8 – 1/4 turn .

NOTE: Loose spark plug may overheat and damage engine. Over tightened spark plug may damage threads in the cylinder head.

Carburettor: Never tamper with factory setting of the carburettor.

Transporting Your Earth Auger

1. Never transport engine inside an enclosed space or vehicle. Fuel or fuel vapours may ignite causing serious injury or death.
2. If fuel is present in the fuel tank, transport in an open vehicle in an upright position.
3. If an enclosed vehicle must be used, remove fuel into an approved fuel container. **DO NOT** siphon by mouth.
4. Run engine to use up the fuel in the carburettor and fuel tank. Always run engine in a well ventilated area.
5. Wipe away any spilled fuel from engine and auger. Allow to dry.

MAINTENANCE

Long Term Storage

If your auger will not be used for more than one month, prepare it for long term storage.

Steps for Long Term Storage

1. Add fuel stabiliser according to manufacturer's instructions.
2. Run engine for 10-15 minutes to ensure that the stabiliser reaches the carburettor.
3. Remove the remainder of the fuel from the fuel tank into an approved fuel container.
4. Remove auger from powerhead and apply a thin layer of grease to the output shaft.
5. Remove all debris from auger and powerhead (engine).
6. Store auger and powerhead (engine) in a vertical position.

CAUTION

Avoid injury! To avoid injury or death, never siphon fuel by mouth.

Avoid injury! Never store auger with fuel in the fuel tank inside an enclosed area or building.

To prevent accidental starting:

Avoid injury! Engine must be turned off and cooled, spark plug wire must be removed from spark plug before checking and adjusting engine or before any repair or maintenance can be done.

Avoid injury! An adult must always do maintenance and repair on engine and auger.

SERVICE, TROUBLESHOOTING AND REPAIR

Service

We build quality and durability into the design of our products; but no amount of careful design by us, and careful maintenance by you, can guarantee a repair-free life for your auger. Most repairs will be minor and easily fixed by following the suggestions in the troubleshooting guide in this section.

The guide will help you pinpoint the causes of common problems and identify remedies.

A parts catalogue is included in this section.

Troubleshooting

PROBLEM	POSSIBLE CAUSE	REMEDY / ACTION
Engine will not start	1. Power switch off	1. Flip switch to ON position
	2. Spark plug wire disconnected	2. Connect spark plug wire to spark plug
	3. Out of fuel	3. Refuel
	4. Spark plug wet, faulty or improperly gapped	4. Clean, replace or gap spark plug
	5. Throttle control not held wide open	5. Hold throttle control wide open when pulling recoil handle
	6. Fuel line hose not positioned in bottom of fuel tank	6. Push fuel line down into fuel in fuel tank
Engine runs rough, floods during operation	1. Dirty air filter	1. Clean or replace air filter
	2. Choke partially engaged	2. Turn off choke
	3. Carburettor out of adjustment	3. Call factory
Engine is hard to start	1. Stale fuel	1. Drain old fuel and replace with fresh. Use fuel stabiliser at end of season
	2. Spark plug wire loose	2. Make sure spark wire is securely attached to spark plug
	3. Dirty carburettor	3. Clean carburettor, use fuel stabiliser
	4. Throttle control not held wide open	4. Prime unit 3 more times, then hold throttle wide open when pulling recoil handle
Engine misses or lacks power	1. Clogged fuel tank	1. Remove and clean
	2. Clogged air filter	2. Clean or replace
	3. Carburettor out of adjustment or bad	3. Call factory
	4. Spark plug wet, faulty or improperly gapped	4. Clean, replace or gap spark plug
Engine runs, then quits	1. Fuel cap not venting	1. Open manual venting fuel cap screw all the way open (anti-clockwise)
	2. Plugged fuel filter	2. Clean or replace
	3. Carburettor out of adjustment or bad	3. Call factory
Engine revs too high	1. Carburettor out of adjustment	1. Call factory
Auger turns at idle	1. Idle speed too high	1. Adjust idle speed lower
	2. Broken clutch spring	2. Replace spring
Auger turns, but has no power	1. Choke on	1. Turn off choke after engine is running
	2. Carburettor out of adjustment	2. Call factory
	3. Broken transmission	3. Call factory
	4. Worn clutch shoes	4. Replace clutch shoes and spring
	5. Worn engine lower seat	5. Call factory
Auger jumps	1. Blade damaged	1. Replace with new blade
Auger cuts slowly	1. Dull blade	1. Buy new blade, or have blade sharpened at factory
	2. Damaged fishtail point	2. Replace fishtail point

WARRANTY & SERVICE

Warranties

Bigger Boyz Toyz offer a 1-year parts warranty on all products used for domestic use from the date of purchase. For all commercial use, a 3-month parts warranty period applies, unless specified in the item listing. All conditions below are based upon the product being faulty or not performing as described. In the instance where a return is required, the purchaser is liable for any shipping cost. Warranties will only be determined by a Bigger Boyz Toyz Technician upon inspection.

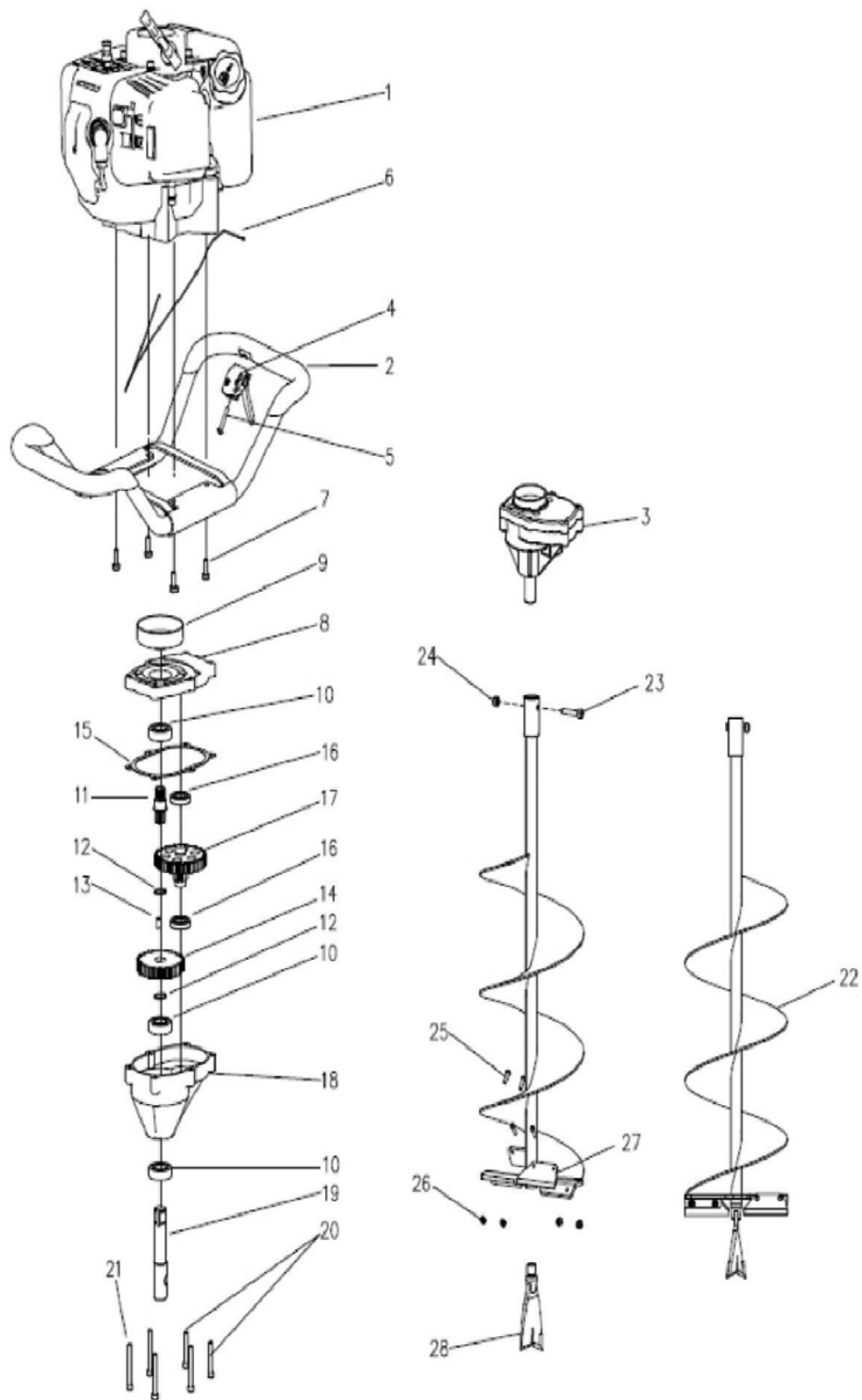
Warranties do not cover accidents, misuse, neglect, natural disaster or act of God or other external causes, or damage caused by operating the equipment in a manner that is not described in the instructions.

Our products come with guarantees that cannot be excluded under the Australian Consumer Law. You are entitled to a replacement or refund for a major failure and for compensation for any other reasonably foreseeable loss or damage. You are also entitled to have the goods repaired or replaced if the goods fail to be of acceptable quality and the failure does not amount to a major failure.

Spare Parts

Spare parts are available. Please see our website (www.bbta.com.au) or contact us at bbt@bbta.com.au for more details.

EXPLODED DIAGRAM & PARTS LIST



EXPLODED DIAGRAM & PARTS LIST

NO	SKU	DESCRIPTION	QTY
1	SP-PHD-51CC-001	GAS ENGINE, 51CC	1
2	SP-PHD-51CC-002	HANDLEBAR ASSEMBLY	1
3	SP-PHD-51CC-003	TRANSMISSION COMPLETE	1
4	SP-PHD-51CC-004	TRIGGER ASSEMBLY	1
5	SP-PHD-51CC-005	BOLT PPH 10-24x16	1
6	SP-PHD-51CC-006	THROTTLE CABLE	1
7	SP-PHD-51CC-007	BOLT HH 1/4"-20x19	4
8	SP-PHD-51CC-008	GEAR CASE TOP	1
9	SP-PHD-51CC-009	CLUTCH DRUM	1
10	SP-PHD-51CC-010	BALL BEARING DOUBLE LIP R12-2RS	3
11	SP-PHD-51CC-011	GEAR 7T PINION THREADED	1
12	SP-PHD-51CC-012	SNAP RING Φ19	2
13	SP-PHD-51CC-013	DOWEL PIN STEEL	1
14	SP-PHD-51CC-014	GEAR 44T	1
15	SP-PHD-51CC-015	GASKET	1

NO	SKU	DESCRIPTION	QTY
16	SP-PHD-51CC-016	BALL BEARING R10	2
17	SP-PHD-51CC-017.2	GEAR 48T	1
17	SP-PHD-51CC-017.3	GEAR 10T	1
18	SP-PHD-51CC-018	GEAR CASE BOTTOM	1
19	SP-PHD-51CC-019	SHAFT OUTPUT 7/8"	1
20	SP-PHD-51CC-020	BOLT HEX SKT HD 1/4"-20x38	2
21	SP-PHD-51CC-021	BOLT HEX SKT HD 1/4"-20x50	4
22	SP-PHD-51CC-022	EARTH AUGER 10"	1
23	SP-PHD-51CC-023	BOLT HEX SKT HD M8x50	1
24	SP-PHD-51CC-024	NUT HEX NYLOC M8	1
25	SP-PHD-51CC-025	BOLT HEX SKT BUTTON HD M6x18	4
26	SP-PHD-51CC-026	NUT HEX FLANGE LOCK M6	4
27	SP-PHD-51CC-027	EARTH BLADE 10" (SR)	2
28	SP-PHD-51CC-028	FISHTAIL POINT SHARPENED	1

SKU	DESCRIPTION	QTY
SP-PHD-51CC-001.1	CRANKCASE AND CYLINDER BLOCK	1
SP-PHD-51CC-002.1	SPARK PLUG	1
SP-PHD-51CC-003.1	VALVE, COMPRESSION RELEASE	1
SP-PHD-51CC-004.1	HALFMOON KEY, FLYWHEEL 3x5.9x13	1
SP-PHD-51CC-005.1	FLYWHEEL, MAGNETO	1
SP-PHD-51CC-006.1	NUT HEX FLANGE M8	1
SP-PHD-51CC-007.1	WASHER ~8.4x16x1.5	2
SP-PHD-51CC-008.1	CLUTCH ROTOR ASSEMBLY W/SPRING	1
SP-PHD-51CC-009.1	WASHER, WAVE ~10	2
SP-PHD-51CC-010.1	BOLT, SHOULDER 8x24	2
SP-PHD-51CC-011.1	PIN, LOCATING ~5x12.5	2
SP-PHD-51CC-012.1	MOUNT RING & SHROUD	1
SP-PHD-51CC-013.1	BOLT W/WASHER HEX SKT HD M5x28	4
SP-PHD-51CC-014.1	IGNITION COIL	1
SP-PHD-51CC-015.1	BOLT HEX SKT HD M4x20	2
SP-PHD-51CC-016.1	WASHER, PLATE 4	2
SP-PHD-51CC-017.1	WINDPIPE, INTAKE	1
SP-PHD-51CC-018.1	GASKET, INTAKE	1
SP-PHD-51CC-019.1	BOLT W/WASHER HEX SKT HD M5x32	1
SP-PHD-51CC-020.1	BOLT W/WASHER HEX SKT HD M5x22	1
SP-PHD-51CC-021.1	GASKET, CARBURETTOR	1
SP-PHD-51CC-022.1	CARBURETTOR ASSEMBLY	1
SP-PHD-51CC-023.1	AIR FILTER ASSEMBLY	1
SP-PHD-51CC-024.1	BOLT W/ WASHER PPH M5x52	2
SP-PHD-51CC-025.1	PLATE, REINFORCEMENT	1
SP-PHD-51CC-026.1	FOAM, AIR FILTER	1
SP-PHD-51CC-027.1	COVER, AIR FILTER	1

SKU	DESCRIPTION	QTY
SP-PHD-51CC-028.1	GASKET, EXHAUST	1
SP-PHD-51CC-029.1	WINDPIPE, EXHAUST	1
SP-PHD-51CC-030.1	MUFFLER ASSEMBLY	1
SP-PHD-51CC-031.1	BOLT W/WASHER PPH M5x12	2
SP-PHD-51CC-031.1	WASHER, FLAT, 5	2
SP-PHD-51CC-033.1	BOLT HEX SKT HD M5x65	2
SP-PHD-51CC-34.1	COVER, MUFFLER	1
SP-PHD-51CC-035.1	BOLT W/WASHER HEX SKT HD M5x12	1
SP-PHD-51CC-036.1	RECOIL CLUTCH	1
SP-PHD-51CC-037.1	PLATE, RECOIL	1
SP-PHD-51CC-038.1	RECOIL ASSEMBLY	1
SP-PHD-51CC-039.1	BOLT W/WASHER HEX SKT HD M5x20	3
SP-PHD-51CC-040.1	BOLT W/WASHER HEX SKT HD M5x25	1
SP-PHD-51CC-041.1	SHROUD, ENGINE	1
SP-PHD-51CC-042.1	COVER, ENGINE SHROUD	1
SP-PHD-51CC-043.1	BOLT W/WASHER PPH M5x16	1
SP-PHD-51CC-044.1	BRACKET LOWER, GAS TANK	1
SP-PHD-51CC-045.1	BRACKET UPPER, GAS TANK	1
SP-PHD-51CC-046.1	GAS TANK	1
SP-PHD-51CC-047.1	FUEL LINE KIT ASSEMBLY	1
SP-PHD-51CC-048.1	GAS CAP ASSEMBLY	1
SP-PHD-51CC-049.1	CUSHION, RUBBER	2
SP-PHD-51CC-050.1	BOLT HEX FLANGE M5x18	4
SP-PHD-51CC-051.1	SHROUD, GAS TANK	1
SP-PHD-51CC-052.1	GASKET, MUFFLER	1
SP-PHD-51CC-053.1	SWITCH, ROCKER	1

YOU MAY ALSO LIKE



Chainsaws



Blowers



Lawn Mowers



Chainsaw Sharpeners

Enquiry or problems with our products?

CALL US (02) 4257 4787



www.bbta.com.au