

OWNER'S MANUAL

Trencher



OWNER'S MANUAL

Assembly & Operating Instructions

BBT Trencher

MODEL NO. BBT-TR-13.5BS



To The Owner

Thank You!

Thank you for purchasing our trencher. It was carefully engineered to provide excellent performance when properly operated and maintained.

Please read this entire manual prior to operating the trencher. It instructs you how to safely and easily set up, operate and maintain your trencher. Please be sure that you, and any other persons who will operate the trencher, carefully follow the recommended safety practices at all times. Failure to do so could result in personal injury or property damage.

All information in this manual is relative to the most recent product information available at the time of printing. Review this manual frequently to familiarize yourself with the machine, its features and operation. Please be aware that this Owner's Manual may cover a range of product specifications for various models. Characteristics and features discussed and/or illustrated in this manual may not be applicable to all models. We reserve the right to change product specifications, designs and equipment without notice and without incurring obligation.

All the power testing information used to establish the power rating of the engine equipped on this trencher can be found at the engine manufacturer's manual or website. If you have any problems or questions concerning the machine, contact our Customer Support Department.

Throughout this manual, all references to right and left side of the trencher are observed from the operating position. The engine manufacturer is responsible for all engine-related issues with regards to performance, power-rating, specifications, warranty and service. Please refer to the engine manufacturer's Owner's Manual packed separately with your trencher for more information.

Customer Support

Please do NOT return the trencher without first contacting the Customer Support Department at bbt@bbta.com.au.

If you have difficulty assembling this product or have any questions regarding the controls, operation, or maintenance of this trencher, please contact our Customer Support Department.

SAVE THESE INSTRUCTIONS

TABLE OF CONTENTS

	Page(s)
To The Owner.....	2
Customer Support.....	2
TABLE OF CONTENTS	3
IMPORTANT SAFETY INFORMATION	4
Additional Information and Potential Changes.....	4
GENERAL SAFETY RULES	5-8
Operator Safety	5
Tool Safety.....	5
Maintenance Safety.....	5
Fuel Safety.....	5
Digging Safety	5
Transportation And Storing	5
Before using the Trencher.....	6
When using the Trencher	6
Protecting Yourself and Those around You	7
Safety for Children and Pets	7
Safety with Fuel-Powered Machines.....	7
General Safety.....	8
OPERATING THE TRENCHER.....	8
FAMILIAR WITH YOUR TRENCHER	9
ASSEMBLING THE TRENCHER.....	10-11
Step 1: Assembling the handle system	10
Step 2: Assembling the blade system.....	11
STARTING AND STOPPING	12
Starting.....	12
Start the engine following the procedures.....	12
Trenching.....	12
SAFETY.....	13
Operator Safety	13
Tool Safety.....	13
Fuel Safety.....	13
Digging Safety	13
MAINTENANCE.....	13-14
Maintaining Your Trencher	13
Maintenance Safety.....	13
Regular Maintenance Checklist.....	14
Engine Service	14
Lubrication	14
SPECIFICATIONS.....	14
TRANSPORTATION.....	15
Transportation and Storing	15
TROUBLESHOOTING.....	15
EXPLOSIVE VIEW AND PARTS LIST	16-22
1. Chain System	16
2. Gear System.....	17
3. Drive System.....	18
4. Depth Control System.....	19
5. Main Frame	20
6. Ratchet Assembly.....	21
WARRANTY & SERVICE	23
Warranties.....	23
Spare Parts.....	23
YOU MAY ALSO LIKE	24



IMPORTANT SAFETY INFORMATION



WARNING: Read and thoroughly understand all instructions in this manual and on the safety decals before assembling or operating this trencher. Failure to do so may cause serious injury or death. Do not allow anyone to operate this trencher who has not read this manual. As with all power equipment, a trencher can be dangerous if assembled or used improperly. Do not operate this trencher if you have any questions concerning its safe operation. To get answers to any questions, call our Customer Support Department.



This **SAFETY ALERT SYMBOL** identifies important safety messages in this manual. Failure to follow this important safety information may result in serious injury or death.



DANGER! This trencher was built to be operated according to the safe operation practices in this manual. As with any type of power equipment, carelessness or error on the part of the operator can result in serious injury. This trencher is capable of amputating hands and feet and throwing debris. Failure to observe the following safety instructions could result in serious injury or death.

The following signals words and meanings are intended to explain the levels of risk associated with this product.



DANGER indicates a hazardous situation which, if not followed, will result in serious injury or death.



WARNING indicates a hazardous situation which, if not avoided, could result in serious injury or death.



CAUTION indicates a hazardous situation which, if not avoided, could result in minor or moderate injury.

NOTICE

NOTICE is important information about the proper use of your trencher. Failure to follow this instruction could result in damage to your trencher or property.

Additional Information and Potential Changes

We reserve the right to discontinue, change, and improve its products at any time without notice or obligation to the purchaser. The descriptions and sections contained in this manual were in effect at printing. Equipment described within this manual may be optional. Some illustrations may not be applicable to your machine.

GENERAL SAFETY RULES

Operator Safety

- Always wear the proper clothing and protective gear. Eye, ear and hand protection, hat, boots, gloves and dust masks are required.
- Keep hair, fingers and all other body parts away from openings and moving parts. Always wear long pants, boots and gloves. Secure hair so it is above shoulder length.
- Do not operate trencher indoors. For outdoor use only.
- Do not operate trencher when tired, ill or under the influence of alcohol, drugs or medication.
- Always assume the digging location contains underground utilities. Contact *Dial Before You Dig* to determine where electrical cables, gas lines, water pipes etc are buried before operation.
- Always use extreme caution while operating the tool. Be sure of your footing and physical capabilities.



Tool Safety

- Inspect entire trencher before each use. Replace damaged or worn parts.
- Check for fuel leaks and make sure all fasteners are in place and securely fastened.
- Replace digging blades that are severely worn. Be sure the digging chain and engine is not moving.

Maintenance Safety

- Maintain according to recommended procedures included in this manual.
- Disconnect the spark plug wire before performing maintenance.
- Stop engine before removing fuel cap.
- Use only genuine replacement parts of the engine manufacturer.

Fuel Safety

- Refuel outdoors nowhere near any sparks or flames.
- Store fuel in a container approved for fuel.
- Do not smoke or allow smoking near fuel or the trencher or while using the trencher.
- Clean up all fuel spills before starting the engine.
- Move at least 4 metres away from fuelling site before starting engine.
- Stop engine before removing fuel cap.

Digging Safety

- Be sure that the area is clear of potential hazards such as pipes, rocks or other materials that could possibly entangle itself around the digging chain or cause unstable footing before using the trencher.
- Keep others, by-standers and helpers outside a 5 metre hazard zone from the trencher.
- Hold the trencher handle firmly with both hands.
- Keep all your body and clothing away from the digging chain, auger and other moving parts.
- Inspect the digging site, soil, job specifications and operator experience may dictate that a different trencher or method be used to do the job.
- Do not leave trenchers open or unmarked.

Transportation And Storing

- Always shut off the fuel valve and engine.
- Always allow the engine to cool.
- Store trencher and fuel where fuel vapours cannot reach sources of combustion like water heaters, electric motors, switches, furnaces etc.
- Always secure this trencher with tie downs or similar restraints when transporting.
- The trencher is to be stored in a manner that prevents it from falling, rolling or tipping over.

GENERAL SAFETY RULES



WARNING! This machine can cause serious injury to the operator and bystanders. The warning and safety instructions in this manual must be followed to provide reasonable safety and efficiency in using and storing. The operator is responsible for following the warnings and instructions in this manual and the trencher. Read the entire Operator's Manual before using this trencher! Restrict the use of this trencher to persons who read, understand and follow the warnings and instructions in this manual and on the trencher. If you have not read and understand the warnings and instructions in this manual and on the trencher, you are not qualified to operate this trencher! Be familiar with the operation and service recommendations to ensure the best performance of your machine.

DANGER



KEEP BACK

Rotating shaft can cause severe injury. Keep arms, legs, hair and loose clothing away.

DANGER



KEEP CLEAR

Foot Crush Zone. May cause serious injury. Keep Back!!

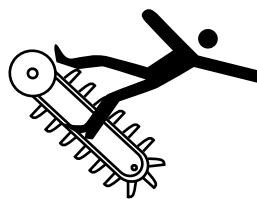
DANGER



PROTECTION

Always wear hearing protection when operating the trencher

DANGER



KEEP CLEAR

Moving Digging Teeth will kill you or cut off arm or leg. Stay Away!



CAUTION! This machine is designed solely to dig trenches and must not be used for any other purpose.

It should only be used by trained operators who are familiar with the content of this manual. It is potentially hazardous to fit or use any parts other than your dealer parts. We disclaim all liability for the consequences of such use, which in addition voids the machine warranty.

Before using the Trencher

NOTICE

- Operators must be fully trained before using this machine.
- User Manual is read and understood.
- Blades are in good condition and secure. All blades are sharpened or replaced in sets.
- All fasteners are checked for tightness.

When using the Trencher

WARNING

- Maintain strict discipline at all times and service machine at specified periods.
- Keep body parts, foreign objects and clothing clear of rotating auger and digging chain.
- Coming into contact with buried utilities while digging can cause severe injuries or DEATH.
- Contact appropriate utility representatives (*Dial Before you Dig*) to determine if/where electrical cables, gas lines, water pipes etc. are buried BEFORE operation.
- **DO NOT** operate the machine whilst under the influence of alcohol or drugs.

GENERAL SAFETY RULES

Protecting Yourself and Those around You

WARNING

This is a high-powered machine, with moving parts operating with high energy. You must operate the machine safely. Unsafe operation can create a number of hazards for you, as well as anyone else in the nearby area. Always take the following precautions when using this machine:

- Keep in mind that the operator or user is responsible for accidents or hazards occurring to other people, their property, and themselves.
- **Always** wear protective goggles or safety glasses with side shields while using the trencher to protect your eyes from possible thrown debris.
- Avoid wearing loose clothing or jewellery, which can catch on moving parts.
- Wear shoes with non-slip treads when using your trencher. If you have safety shoes, we recommend wearing them. Do not use the machine while barefoot or wearing open shoes.
- Keep bystanders at least 5 metres away from your work area at all times. Stop the engine when another person or pet approaches.

Safety for Children and Pets

WARNING

Tragic accidents can occur if the operator is not alert to the presence of children and pets. Children are often attracted to the machine and the digging activity. Never assume that children will remain where you last saw them. Always follow these precautions:

- Keep children and pets at least 5 metres from the working area and ensure they are under the watchful care of a responsible adult.
- Be alert and turn the machine off if children or pets enter the work area.
- **Never** allow children to operate the trencher.

Safety with Fuel-Powered Machines

WARNING

Fuel is a highly flammable liquid. Fuel also gives off a flammable vapour that can be easily ignited and cause an explosion. Never overlook the hazards of fuel. Always follow these precautions:

- **Never** fill the engine in an enclosed area or without proper ventilation as the exhaust from the engine contains carbon monoxide, which is an odourless, tasteless and deadly poisonous gas.
- Store all fuel and oil in containers specifically designed and approved for this purpose and keep away from heat and open flame, and out of the reach of children.
- Replace rubber fuel lines and grommets when worn or damaged and after 5 years of use.
- Fill the fuel tank outdoors with the engine off and allow the engine to cool completely. Don't handle fuel if you or anyone nearby is smoking, or if you're near anything that could cause it to ignite or explode. Reinstall the fuel tank cap and fuel container cap securely.
- If you spill fuel, do not attempt to start the engine. Move the machine away from the area of the spill and avoid creating any source of ignition until the gas vapours have dissipated. Wipe up any spilled fuel to prevent a fire hazard and properly dispose of the waste.
- Allow the engine to cool completely before storing in any enclosure. Never store a machine that has fuel in the tank, or a fuel container, near an open flame or spark such as a water heater, space heater, clothes dryer or furnace.
- **Never** make adjustments or repairs with the engine running. Shut down the engine, disconnect the spark plug wire, keeping it away from the spark plug to prevent accidental starting, wait 5 minutes before making adjustments or repairs.
- **Never** tamper with the engine's governor setting. The governor controls the maximum safe operation speed and protects the engine. Over-speeding the engine is dangerous and will cause damage on the engine and to the other moving parts of the machine.
- **Keep** combustible substances away from the engine when it is hot.
- **Never** cover the machine while the muffler is still hot.
- **Do not** operate the engine with the air cleaner or the carburettor air intake cover removed. Removal of such parts could create a fire hazard. Do not use flammable solutions to clean the air filter.
- The muffler and engine become very hot and can cause severe burns; do not touch.

GENERAL SAFETY RULES

General Safety

WARNING

Operating this trencher safely is necessary to prevent or minimize the risk of death or serious injury. Unsafe operation can create a number of hazards for you. Always take the following precautions when operating:

- Your trencher is a powerful tool, not a toy. Exercise extreme caution at all times. The machine is designed to dig trenches. Do not use it for any other purpose.
- Know how to stop the trencher quickly.
- Exercise caution to avoid slipping or falling.
- See manufacturer's instructions for proper operation and installation of accessories.
- **Never** use the machine without ensuring that all guards and shields are in place.
- **Never**, under any conditions, remove, bend, cut, fit, weld or otherwise alter standard parts on the trencher. This includes all shields and guards. Modifications to your machine could cause personal injuries and property damage and will void your warranty.
- If the machine starts to make an unusual noise or vibrate, shut down the engine, disconnect the spark plug wire, keeping it away from the spark plug to prevent accidental starting, wait 5 minutes for engine to cool down, then inspect for damage. Vibration is generally a warning of trouble. Check damaged parts and clean, repair and/or replace as necessary.
- **Never** tamper with safety devices. Check their proper operation regularly.
- **Before** performing any maintenance or inspection procedure, shut down the engine, disconnect the spark plug wire keeping it away from the spark plug to prevent accidental starting, wait 5 minutes for machine to cool down.
- **Never** allow people who are unfamiliar with these instructions to use the trencher. Allow only responsible individuals who are familiar with these rules of safe operation to use your machine.
- **Never** overload or attempt to dig trenches beyond the manufacturer's recommendation. It could result in personal injury or damage to the machine.
- While using, don't hurry or take things for granted. When in doubt about the equipment or your surroundings stop the machine and take time to look things over.
- Never operate the machine when under the influence of alcohol, drugs, or medication.
- Use the machine only in daylight.
- Stay alert for hidden hazards or traffic.
- Keep all nuts and bolts tight and keep the equipment in good operating condition.

A Note to All Users

List of warnings and cautions cannot be all-inclusive. If a situation occurs that is not covered by this manual, the operator must apply common sense and operate this trencher in a safe manner.

OPERATING THE TRENCHER

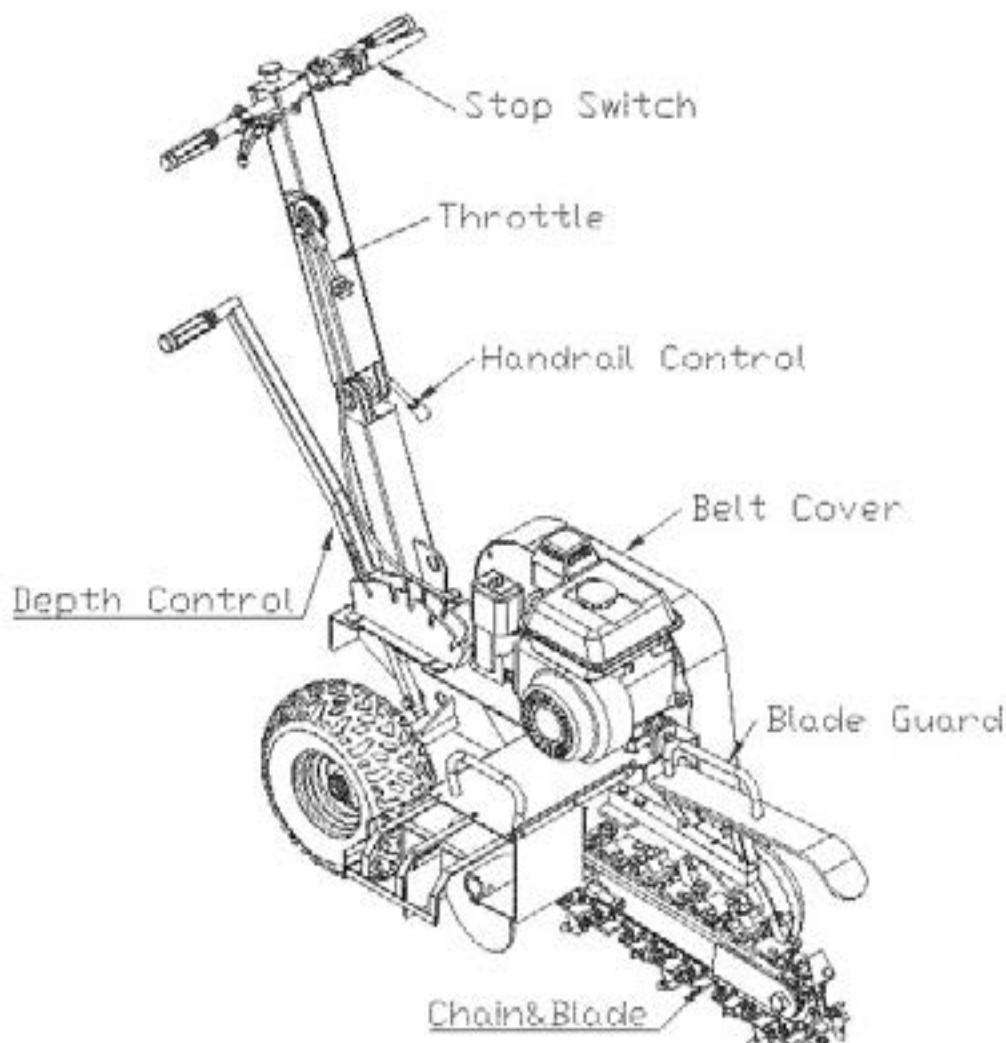
It may be helpful to better familiarize yourself with the features of your trencher before beginning the steps outlined in this chapter.

CAUTION

1. Read and understand all instructions, safety precautions, and/or warnings listed in *General Safety Rules* BEFORE operating the trencher. If any doubt or question arises about the correct or safe method of performing anything found in this manual, please contact the dealers in your area (www.bbta.com.au).
2. Before loading and operating the trencher, always wear protective gear, including safety goggles, hearing protection, tight-fitting gloves without draw strings or loose cuffs and steel-toed shoes.

FAMILIAR WITH YOUR TRENCHER

It may be helpful to familiarise yourself with the controls and features of the trencher. If you have any questions, please contact the dealers in your area (www.bbta.com.au).

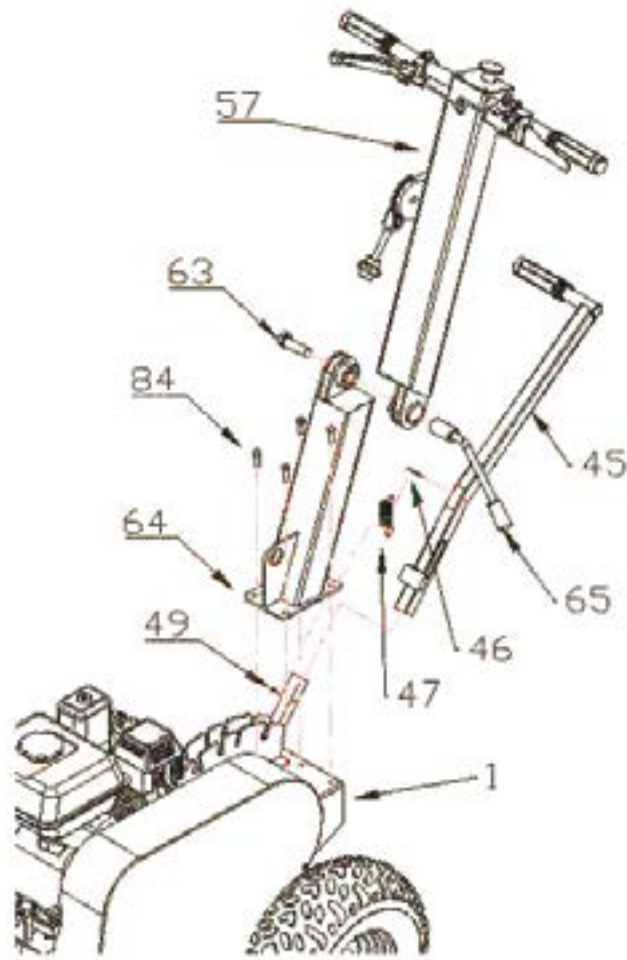


NOTICE

1. It is your responsibility as the operator of this piece of equipment to know what specific requirements, precautions and work hazards exist. You must read and understand all of the information contained in the user manual.
2. The trencher is a small, operator propelled, chain-type trencher designed for the installation of lines that require a narrow shallow trench. It has more than enough power to trench through the toughest soils, however, because of its small size, low horse power and trench capacity, it is limited in what it is capable of doing. The job site, soil conditions, job specifications and operator experience may dictate that a different tool or method be used to do the job.
3. The digging chain has tendency to pull the trencher in the opposite direction you want to dig. For this reason, be sure that the digging teeth are not in contact with the ground or other objects while starting the engine and that the wheel lock device engages before lowering the digging bar into the ground. Be sure that you have a firm grip on the machine and are ready to control it when the digging bar comes in contact with the ground.
4. The trencher has a tendency to "hop" or "buck" under certain conditions. This can be the result of certain soil conditions or buried objects that the trencher cannot cut through or lift to the surface. The trencher must be stopped and the object removed or restart the trench beyond the object.

ASSEMBLING THE TRENCHER

Step 1: Assembling the handle system



Ref. No	Description	Ref. No.	Description
1	Main frame	57	Upper handle
45	Shift Handle and spring	63	M16 bolt
46	Cotter pin	64	Coil fixation
47	Shift handle and spring	65	Angle arm
49	M8 bolt	84	M8*20 hexagon bolt

- Secure lower handle (64) to the main frame (1) tightly with bolts (84).
- Assemble upper handle (57) to the lower handle (64), secure them with bolt (63) and angle arm (65) tightly.
- Plug shift arm (45) to the right place as figure shows and hold it with bolt (49) and spring (47), then secure the other side of the spring with pin (46) to the arm (45).

STARTING AND STOPPING

Starting

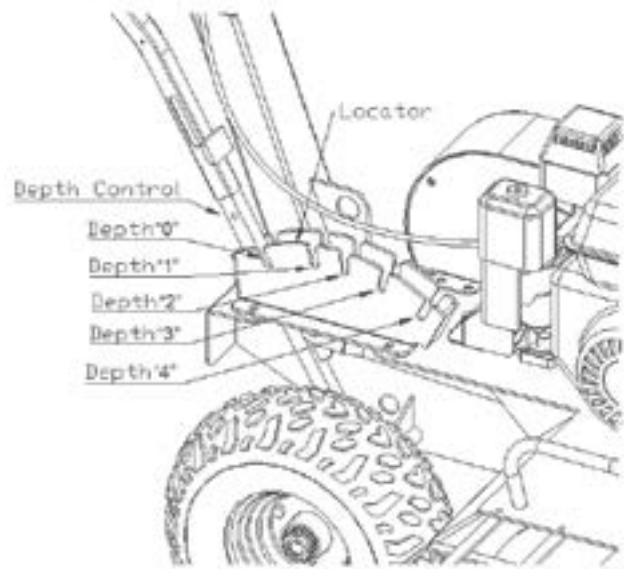
Be sure the depth control is in the "0" depth position and move both stop switches to the "ON" position. Always stand to the rear of the trencher, away from the side delivery auger and digging chain while starting the engine. Always start the trencher at the job site and allow it to warm up. While the machine is running, check that all controls are working properly before using.

Start the engine following the procedures

1. Make sure the fuel shut-off valve is in the "ON" position.
2. Move the choke control lever to the "CHOKE" position (should only be needed if the engine is cold).
3. Move the throttle control lever to the "FAST" position.
4. **Recoil Start:** Turn the Ignition Switch to the "ON" position. Grasp the recoil starter handle and slowly pull until you feel resistance. Let the cord retract a little bit then pull the cord rapidly to start the engine. One or two pulls usually starts the engine.
5. **Electric Start:** Turn and hold the Key in the start position until Engine starts then let the Key return to run position.
6. Move the choke control lever (if used for cold engine) slowly back to the "RUN" position when the engine is running well.
7. If the trencher has not been running (cold engine), warm up the engine by running the engine at half throttle for 3 to 4 minutes, then advance the engine throttle control to the maximum speed.

Trenching

Be sure the digging chain is not turning when the engine is at an idle. Be sure the engine is off or at an idle before moving the trencher at the job site.



WORK POSITION	600mm TRENCHER
Depth " 0 "	0mm
Depth " 1 "	200mm
Depth " 2 "	400mm
Depth " 3 "	600mm
Depth " 4 "	

NOTE: All depths are approximate. Actual depth may vary depending upon soil conditions and trencher blade wear. Also, soil conditions and operator experience will dictate actual trenching action and speed.

A general description on how to trench

1. With the engine running and at an idle and the depth control in the depth "0", apply downward pressure on the handle to raise the digging chain.
2. Lift the depth control handle and slowly move the lever forward into the desired depth notch.
3. Apply downward pressure to the handlebar so the digging chain is not in contact with the ground. Increase the engine speed and hold on to the handlebar with both hands. Slowly relieve the downward pressure on the handlebar allowing the digging chain to penetrate the soil until the chosen depth is reached.
4. Using an intermittent pulling action, pull the trencher toward you 10-15cm then relax your pull, allowing the trencher to again reach the chosen depth.
5. Repeat this action until you have finished the job. The wheel lock will aid you in this operation by helping to hold the trencher in position until the next motion is started.

Stopping

There are two stop switches on the trencher; one on the handle bar and one on the engine. Refer to the engine manual for the switch location on your trencher. The operator can turn the trencher off at any time by switching either stop switch to the "OFF" position. Both switches must be "ON" before the engine can start.

Stopping the engine following the procedures

1. Switching stop switch on handle.
2. Move the Throttle Lever to IDLE.
3. **Recoil Start:** Turn the Ignition Switch to the OFF position.
4. **Electric Start:** Turn the Key to the OFF position.

When Blocked

If the chain stops moving while digging trenches, the engine should be stopped, remove the mud or anything which is stuck in the chain, then restart the engine, and start digging again.

SAFETY

Operator Safety

WARNING

1. All the rack and pinion should be greased before every use.
2. Always wear the proper clothing and protective gear. Eye and ear protection, hard hat, boots, gloves and dust masks are what is required.
3. Keep hair, fingers, and all other body parts away from openings and moving parts. Always wear, long pants, boots and gloves. Secure hair so it is above shoulder length.
4. Do not operate trencher indoors. Outdoor use only.
5. Do not operate trencher when tired, ill or under the influence of alcohol, drugs or medication.
6. Always assume the digging location contains underground utilities. Contact the appropriate utility company (Dial Before You Dig) to determine where electrical cables, gas lines, water pipes, etc. are buried before operation.
7. Always use extreme caution while operating the tool. Be sure of your footing and physical capabilities.

Tool Safety

CAUTION

1. Inspect entire trencher before each use. Replace damaged or worn parts.
2. Check for fuel leaks and make sure all fasteners are in place and securely fastened.
3. Replace digging blades that are severely worn. Be sure the digging chain and engine is not moving.

Fuel Safety

WARNING

1. Refuel outdoors and where there are no sparks and flames.
2. Store fuel in a container approved for fuel.
3. Do not smoke or allow smoking near fuel or the trencher or while using the trencher.
4. Clean up all fuel spills before starting engine.
5. Move at least 4 metres away from fueling site before starting engine.
6. Stop engine before removing fuel cap.

Digging Safety

WARNING

1. Be sure that the area is clear of potential hazards, such as pipes, rocks or other materials that could possibly entangle itself around the digging chain or cause unstable footing before using the trencher.
2. Keep others bystanders and helpers outside a 5 metre hazard zone from the trencher. Hold the trencher handle firmly with both hands.
3. Keep all your body and clothing away from the digging chain, auger and other moving parts.
4. Inspect the digging site. Soil, job specifications and operator experience may dictate that a different trencher or method be used to do the job.
5. Do not leave trenches open or unmarked.

MAINTENANCE

Maintaining Your Trencher

Regular maintenance is the way to ensure the best performance and long life of your machine. Please refer to this manual and the engine manufacturer's user manual for maintenance procedures.

Maintenance Safety

1. Before performing any maintenance procedure or inspection, stop the engine, wait five minutes to allow all parts to cool.
2. Disconnect the spark plug wire, keeping it away from the spark plug. Disconnect the Battery Terminals (Electrical start only).
3. Stop engine before removing fuel cap.
4. Use only genuine replacement parts of the engine manufacturer.

MAINTENANCE

Regular Maintenance Checklist

Procedure	Before Each Use	Every 3 Hours	Every 25 Hours	Every 100 Hours
Check engine oil level	○			
Check general equipment condition	○			
Check wedge for sharpness	○			
Grease surface of slide rail		○		
Check belts	○			
Grease rack and pinion		○		
Check tyre pressure			○	
Clean engine exterior and cooling			○	
Change engine oil	First time 5 hours			Every 12 months
Replace air filter				○
Replace spark plug				○

NOTICE

Engine Service

Refer to the engine manufacturer's user manual for engine maintenance.

Lubrication

All Bearings of trencher are sealed units and should have sufficient lubricant to last the life of your machine with normal use.

SPECIFICATIONS

Model name	BBT-TR-13.5BS
Engine	Briggs & Stratton 13HP 4 Stroke
Power	Petrol
Trench Capacity	60m/hour
Trench Width	100mm
Trench Depth	200,400,600mm
Blade	27 carbide alloy blades
Chain Length	2000mm
Chain Speed(Max)	550m/min
Tyre	145/7.0-6
Overall Height	1100mm
Overall Length	2100mm
Overall Width	720mm
Weight	185kgs

SPECIFICATIONS ARE SUBJECT TO CHANGE WITHOUT NOTICE

TRANSPORTATION

Transportation and Storing

1. Always shut off the fuel valve and engine.
2. Always allow the engine to cool.
3. Store trencher and fuel where fuel vapours cannot reach sources of combustion like, water heaters, electric motors, switches, furnaces, etc.
4. Always secure this trencher with tie downs or similar restraints when transporting.
5. The trencher shall be stored in manner that prevents it from falling, rolling or tipping over.

TROUBLESHOOTING

Most problems are easy to fix. Consult the Troubleshooting Table below for common problems and their solutions. If you continue to experience problems, contact the dealers in your area.

WARNING

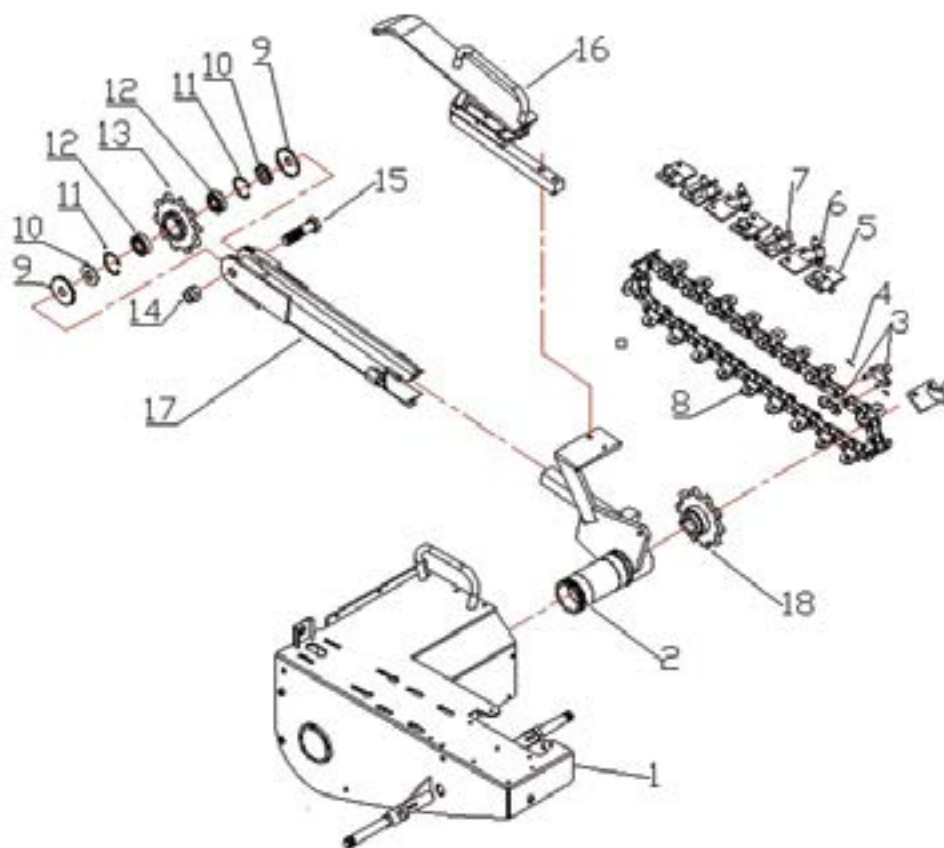
Before performing any maintenance procedure or inspection, stop the engine, wait five minutes to allow all parts to cool. Disconnect the spark plug wire, keeping it away from the spark plug.

Troubleshooting Table

SYMPTOM	POSSIBLE CAUSE
The engine won't start. (Please refer to the engine user manual for engine-specific procedures.)	<ul style="list-style-type: none"> • Is the ignition switch in the "ON" position? • Is the fuel shut-off valve on? • Are you using fresh, clean fuel? If the fuel is older than 14 days, change it. • Is the spark plug clean? If the spark plug is dirty or cracked, change it. If it's oily, leave it out, hold a rag over the plug hole and pull the recoil cord several times to blow out any oil in the cylinder, then wipe off the plug and reinsert it.
The engine lacks power or is not running smoothly. (Please refer to the engine user manual for engine-specific procedures)	<ul style="list-style-type: none"> • Check that the Throttle lever is in the "Run" position. • Is the air filter clean? If it's dirty, change it following the procedure in the engine manufacturer's owner's manual. • Is the spark plug clean? If it's dirty or cracked, change it. If it's oily, leave it out, hold a rag over the plug hole and pull the recoil cord several times to blow out any oil in the cylinder, then wipe off the plug and reinsert it. • Are you using fresh, clean fuel? If the fuel is older than 14 days, change it. Does your engine have the right amount of clean oil ? If it's dirty, change it following the procedure in the engine manufacturer's owner's manual. • Check the oil level and adjust as needed.
Engine smokes. (Please refer to the engine user manual for engine-specific procedures.)	<ul style="list-style-type: none"> • Check the oil level and adjust as needed. • Check the air filter and clean or replace if needed. • You may be using the wrong oil - too light for the temperature. • Refer to your Engine Owner's manual for detailed information. • Clean the cooling fins if they're dirty.

EXPLOSIVE VIEW AND PARTS LIST

1. Chain System

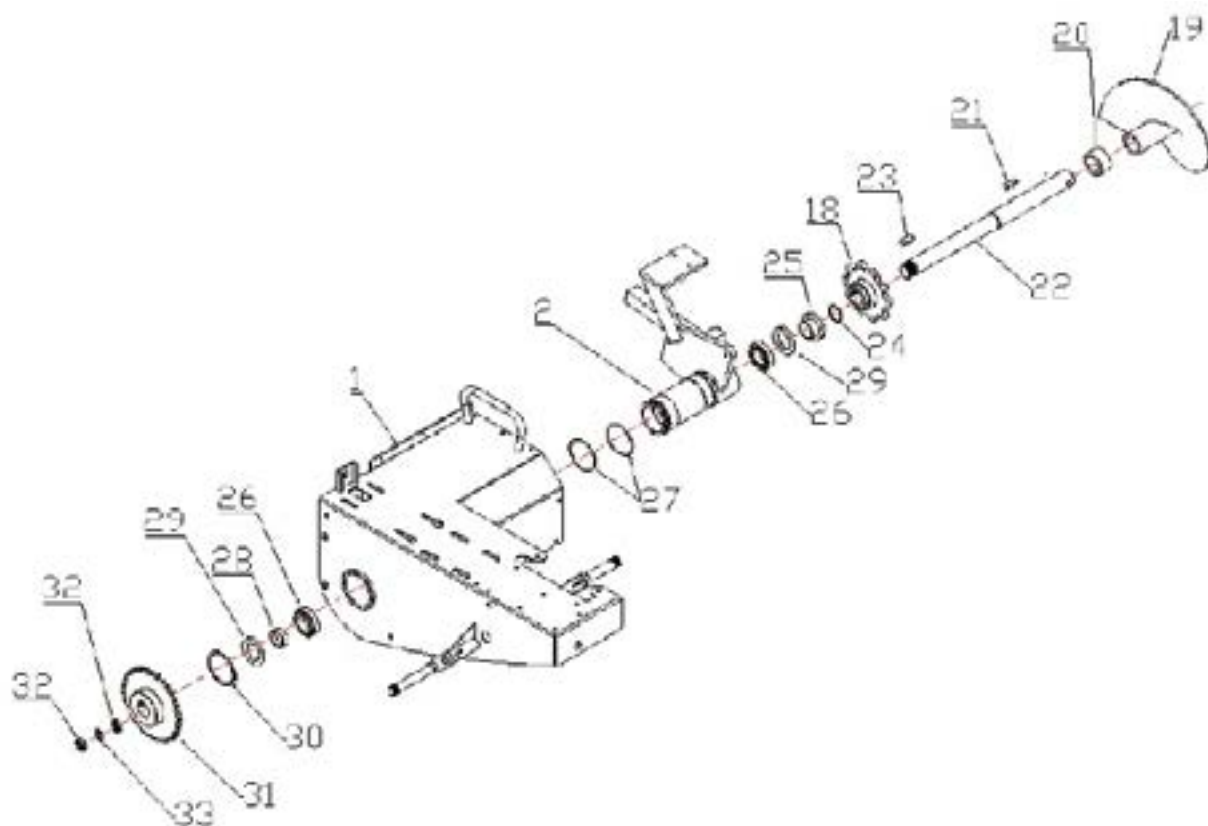


Ref. No	SKU	Description
1	BBT-TR-13.5BS-001	Main frame
2	BBT-TR-13.5BS-002	Chain axle plate
3	BBT-TR-13.5BS-003	Chain lock
4	BBT-TR-13.5BS-004	Cotter pin
5	BBT-TR-13.5BS-005	Left blade
6	BBT-TR-13.5BS-006	Middle blade
7	BBT-TR-13.5BS-007	Right blade
8	BBT-TR-13.5BS-008	Chain
9	BBT-TR-13.5BS-009	Chain spacer

Ref. No	SKU	Description
10	BBT-TR-13.5BS-010	Bearing guard
11	BBT-TR-13.5BS-011	Bead flange
12	BBT-TR-13.5BS-012	6204 bearing
13	BBT-TR-13.5BS-013	Chain wheel B
14	BBT-TR-13.5BS-014	M20 bolt
15	BBT-TR-13.5BS-015	M20 bolt
16	BBT-TR-13.5BS-016	Chain cover
17	BBT-TR-13.5BS-017	Chain adapter
18	BBT-TR-13.5BS-018	Chain wheel A

EXPLOSIVE VIEW AND PARTS LIST

2. Gear System

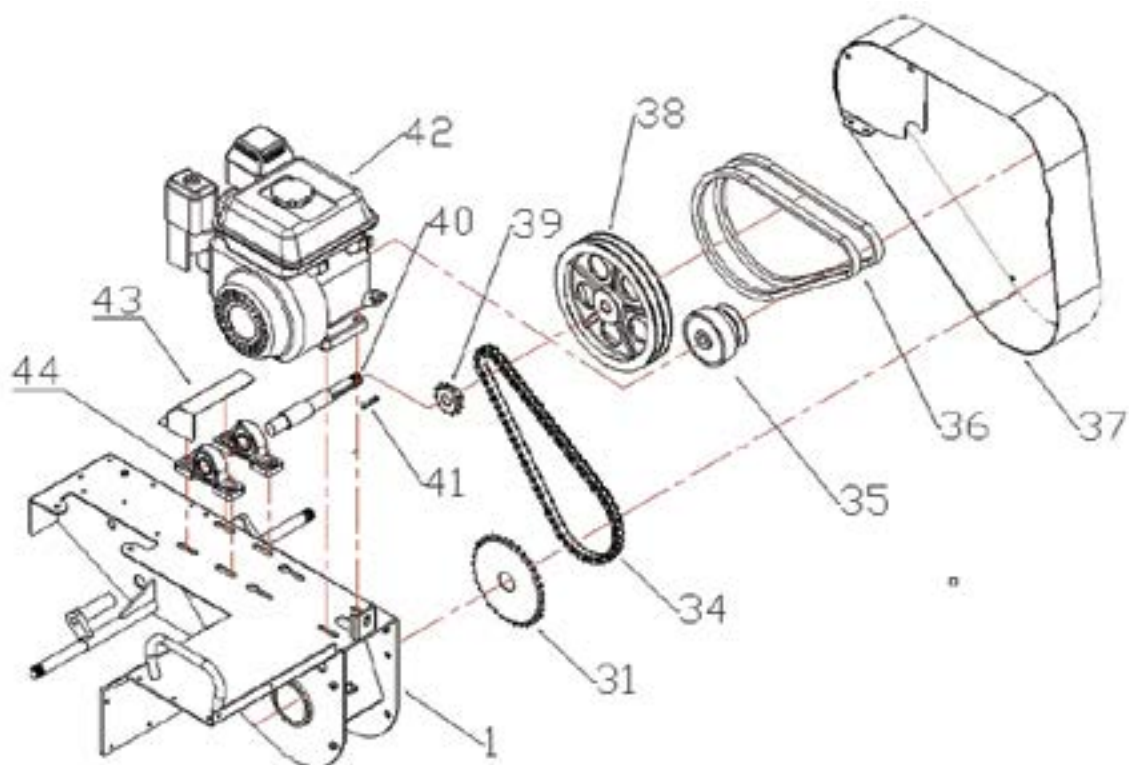


Ref. No	SKU	Description
1	BBT-TR-13.5BS-001.1	Main frame
2	BBT-TR-13.5BS-002.1	Chain axle plate
18	BBT-TR-13.5BS-018.1	Chain wheel A
19	BBT-TR-13.5BS-019.1	Ridge
20	BBT-TR-13.5BS-020.1	Ridge spacer
21	BBT-TR-13.5BS-021.1	8*7 keyway
22	BBT-TR-13.5BS-022.1	Gear axle
23	BBT-TR-13.5BS-023.1	8*7 keyway
24	BBT-TR-13.5BS-024.1	Outer circlip

Ref. No	SKU	Description
25	BBT-TR-13.5BS-025.1	Taper bearing flange spacer
26	BBT-TR-13.5BS-026.1	Taper bearing base
27	BBT-TR-13.5BS-027.1	O-ring
28	BBT-TR-13.5BS-028.1	Taper bearing base
29	BBT-TR-13.5BS-029.1	Skeleton oil seal
30	BBT-TR-13.5BS-030.1	Bead flange
31	BBT-TR-13.5BS-031.1	Gear wheel
32	BBT-TR-13.5BS-032.1	M30x1.5 screw nut
33	BBT-TR-13.5BS-033.1	Washer of M30 screw nut

EXPLOSIVE VIEW AND PARTS LIST

3. Drive System

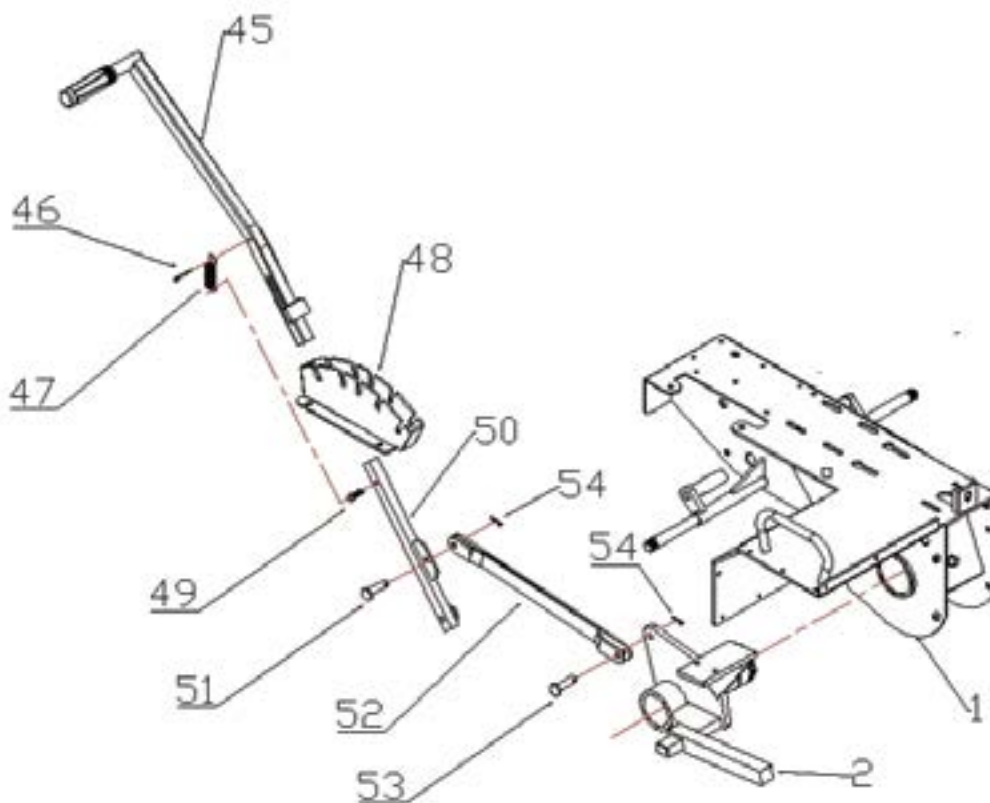


Ref. No	SKU	Description
1	BBT-TR-13.5BS-001.2	Main frame
31	BBT-TR-13.5BS-031.2	Gear wheel
34	BBT-TR-13.5BS-034.2	Drive chain
35	BBT-TR-13.5BS-035.2	Clutch
36	BBT-TR-13.5BS-036.2	Belt
37	BBT-TR-13.5BS-037.2	Belt cover
38	BBT-TR-13.5BS-038.2	Pulley

Ref. No	SKU	Description
39	BBT-TR-13.5BS-039.2	Small chain wheel
40	BBT-TR-13.5BS-040.2	Drive shaft
41	BBT-TR-13.5BS-041.2	6*6 keyway
42	BBT-TR-13.5BS-042.2	Engine
43	BBT-TR-13.5BS-043.2	Bearing cover
44	BBT-TR-13.5BS-044.2	Bearing

EXPLOSIVE VIEW AND PARTS LIST

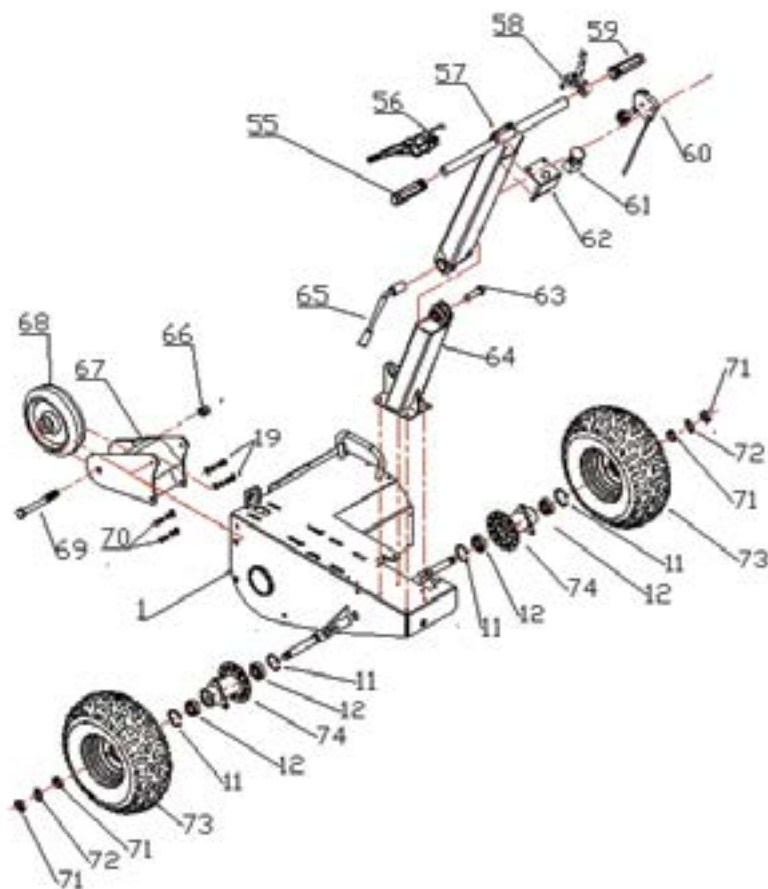
4. Depth Control System



Ref. No	SKU	Description	Ref. No	SKU	Description
1	BBT-TR-13.5BS-001.3	Main frame	49	BBT-TR-13.5BS-049.3	Cotter pin
2	BBT-TR-13.5BS-002.3	Chain axle plate	50	BBT-TR-13.5BS-050.3	Depth control handle
45	BBT-TR-13.5BS-045.3	Shift handle	51	BBT-TR-13.5BS-051.3	Pin
46	BBT-TR-13.5BS-046.3	Cotter pin	52	BBT-TR-13.5BS-052.3	Shift rod
47	BBT-TR-13.5BS-047.3	Shift handle spring	53	BBT-TR-13.5BS-053.3	Pin
48	BBT-TR-13.5BS-048.3	Shift deck	54	BBT-TR-13.5BS-054.3	Cotter pin

EXPLOSIVE VIEW AND PARTS LIST

5. Main Frame

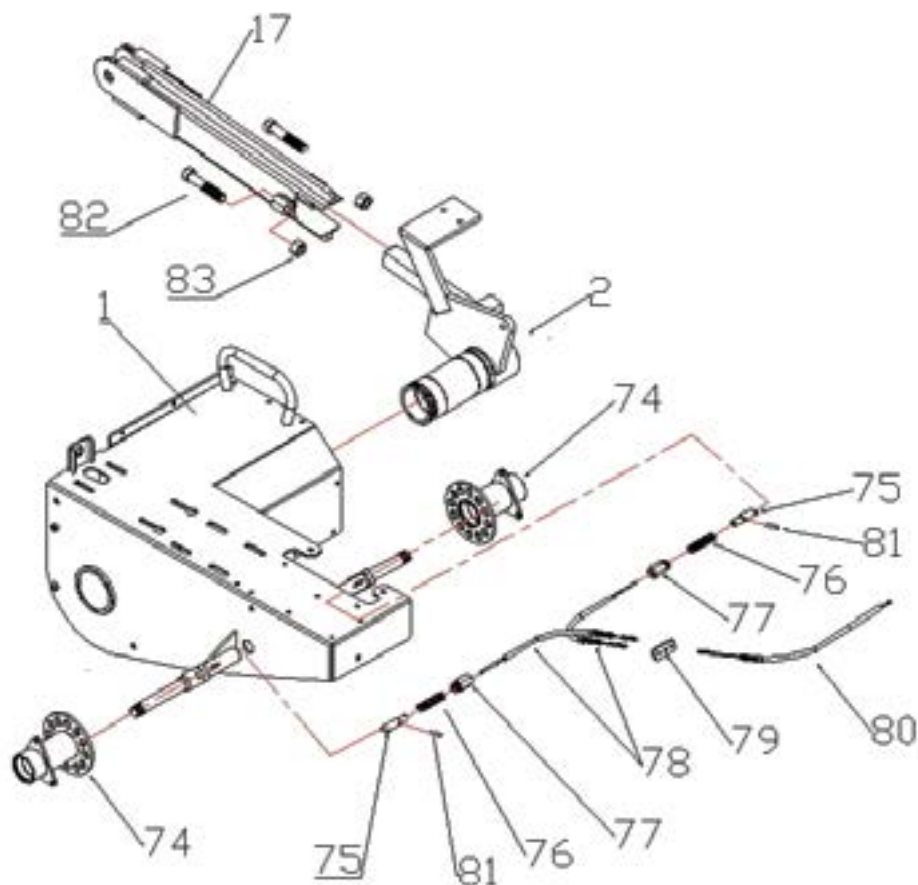


Ref. No	SKU	Description
1	BBT-TR-13.5BS-001.4	Main frame
11	BBT-TR-13.5BS-011.4	Bead flange
12	BBT-TR-13.5BS-012.4	6204 bearing
19	BBT-TR-13.5BS-019.4	washer
55	BBT-TR-13.5BS-055.4	Handle cover
56	BBT-TR-13.5BS-056.4	Emergency stop handle
57	BBT-TR-13.5BS-057.4	Upper handle
58	BBT-TR-13.5BS-058.4	Handle
59	BBT-TR-13.5BS-059.4	Handle cover
60	BBT-TR-13.5BS-060.4	Throttle switch
61	BBT-TR-13.5BS-061.4	Emergency stop switch
62	BBT-TR-13.5BS-062.4	Plate for emergency stop switch

Ref. No	SKU	Description
63	BBT-TR-13.5BS-063.4	M16 bolt
64	BBT-TR-13.5BS-064.4	Lower handle
65	BBT-TR-13.5BS-065.4	Angle arm
66	BBT-TR-13.5BS-066.4	M16 bolt
67	BBT-TR-13.5BS-067.4	Frame of front wheel
68	BBT-TR-13.5BS-068.4	Front wheel
69	BBT-TR-13.5BS-069.4	M16 bolt
70	BBT-TR-13.5BS-070.4	M8 bolt
71	BBT-TR-13.5BS-071.4	M20x1.5 bolt
72	BBT-TR-13.5BS-072.4	Washer of M20 bolt
73	BBT-TR-13.5BS-073.4	Tyre

EXPLOSIVE VIEW AND PARTS LIST

6. Ratchet Assembly



Ref. No	SKU	Description
1	BBT-TR-13.5BS-001.5	Main frame
2	BBT-TR-13.5BS-002.5	Outer shaft
17	BBT-TR-13.5BS-017.5	Link frame
74	BBT-TR-13.5BS-074.5	Ratchet wheel
75	BBT-TR-13.5BS-075.5	Cotter pin
76	BBT-TR-13.5BS-076.5	Spring
77	BBT-TR-13.5BS-077.5	Threaded sleeve

Ref. No	SKU	Description
78	BBT-TR-13.5BS-078.5	Short stay wire
79	BBT-TR-13.5BS-079.5	Connecting link of stay wire
80	BBT-TR-13.5BS-080.5	Long stay wire
81	BBT-TR-13.5BS-081.5	Cotter pin
82	BBT-TR-13.5BS-082.5	M16 bolt
83	BBT-TR-13.5BS-083.5	M16 screw

EXPLOSIVE VIEW AND PARTS LIST

PART#	SKU	DESCRIPTION
1	BBT-TR-13.5BS-001	Main frame
2	BBT-TR-13.5BS-002	Chain axle plate
3	BBT-TR-13.5BS-003	Chain lock
4	BBT-TR-13.5BS-004	Cotter pin
5	BBT-TR-13.5BS-005	Left blade
6	BBT-TR-13.5BS-006	Right blade
7	BBT-TR-13.5BS-007	Middle blade
8	BBT-TR-13.5BS-008	Chain
9	BBT-TR-13.5BS-009	Chain spacer
10	BBT-TR-13.5BS-010	Bearing guard
11	BBT-TR-13.5BS-011	Bead flange
12	BBT-TR-13.5BS-012	6204 bearing
13	BBT-TR-13.5BS-013	Chain wheel B
14	BBT-TR-13.5BS-014	M20 bolt
15	BBT-TR-13.5BS-015	M20 bolt
16	BBT-TR-13.5BS-016	Chain cover
17	BBT-TR-13.5BS-017	Chain adapter
18	BBT-TR-13.5BS-018	Chain wheel A
19	BBT-TR-13.5BS-019	Ridge
20	BBT-TR-13.5BS-020	Ridge spacer
21	BBT-TR-13.5BS-021	8 x 7 keyway
22	BBT-TR-13.5BS-022	Gear axle
23	BBT-TR-13.5BS-023	8 x 7 keyway
24	BBT-TR-13.5BS-024	Outer circlip
25	BBT-TR-13.5BS-025	Taper bearing flange spacer
26	BBT-TR-13.5BS-026	Taper bearing base
27	BBT-TR-13.5BS-027	O-ring
28	BBT-TR-13.5BS-028	Taper bearing base
29	BBT-TR-13.5BS-029	Skeleton oil seal
30	BBT-TR-13.5BS-030	Bead flange
31	BBT-TR-13.5BS-031	Gear wheel
32	BBT-TR-13.5BS-032	M30X1.5 screw nut
33	BBT-TR-13.5BS-033	Washer M30x1.5 screw nut
34	BBT-TR-13.5BS-034	Drive chain
35	BBT-TR-13.5BS-035	Clutch
36	BBT-TR-13.5BS-036	Belt
37	BBT-TR-13.5BS-037	Belt cover
38	BBT-TR-13.5BS-038	Pulley
39	BBT-TR-13.5BS-039	Small chain wheel
40	BBT-TR-13.5BS-040	Drive shaft
41	BBT-TR-13.5BS-041	6 x 6 keyway
42	BBT-TR-13.5BS-042	Engine
43	BBT-TR-13.5BS-043	Bearing Cover

PART#	SKU	DESCRIPTION
44	BBT-TR-13.5BS-044	Bearing
45	BBT-TR-13.5BS-045	Shift Handle
46	BBT-TR-13.5BS-046	Cotter pin
47	BBT-TR-13.5BS-047	Shaft handle spring
48	BBT-TR-13.5BS-048	Shaft deck
49	BBT-TR-13.5BS-049	Cotter pin
50	BBT-TR-13.5BS-050	Depth control handle
51	BBT-TR-13.5BS-051	Pin
52	BBT-TR-13.5BS-052	Shift rod
53	BBT-TR-13.5BS-053	Pin
54	BBT-TR-13.5BS-054	Cotter pin
55	BBT-TR-13.5BS-055	Handle cover
56	BBT-TR-13.5BS-056	Emergency stop handle
57	BBT-TR-13.5BS-057	Upper handle
58	BBT-TR-13.5BS-058	Handle
59	BBT-TR-13.5BS-059	Handle cover
60	BBT-TR-13.5BS-060	Throttle switch
61	BBT-TR-13.5BS-061	Emergency stop switch
62	BBT-TR-13.5BS-062	Plate of emergency stop switch
63	BBT-TR-13.5BS-063	M16 bolt
64	BBT-TR-13.5BS-064	Lower handle
65	BBT-TR-13.5BS-065	Angle arm
66	BBT-TR-13.5BS-066	M16 bolt
67	BBT-TR-13.5BS-067	Frame of front wheel
68	BBT-TR-13.5BS-068	Front wheel
69	BBT-TR-13.5BS-069	M16 bolt
70	BBT-TR-13.5BS-070	M8 bolt
71	BBT-TR-13.5BS-071	M20x1.5 bolt
72	BBT-TR-13.5BS-072	Washer of M20 bolt
73	BBT-TR-13.5BS-073	Tyre
74	BBT-TR-13.5BS-074	Ratchet wheel
75	BBT-TR-13.5BS-075	Cotter pin
76	BBT-TR-13.5BS-076	Spring
77	BBT-TR-13.5BS-077	Threaded sleeve
78	BBT-TR-13.5BS-078	Short stay wire
79	BBT-TR-13.5BS-079	Connecting link of stay wire
80	BBT-TR-13.5BS-080	Long stay wire
81	BBT-TR-13.5BS-081	Cotter pin
82	BBT-TR-13.5BS-082	M16 bolt
83	BBT-TR-13.5BS-083	M16 bolt
84	BBT-TR-13.5BS-084	M8 bolt
85	BBT-TR-13.5BS-085	M10 bolt
86	BBT-TR-13.5BS-086	M8 bolt

WARRANTY & SERVICE

Warranties

Bigger Boyz Toyz offer a 1-year parts warranty on all products used for domestic use from the date of purchase. For all commercial use, a 3-month parts warranty period applies, unless specified in the item listing. All conditions below are based upon the product being faulty or not performing as described. In the instance where a return is required, the purchaser is liable for any shipping cost. Warranties will only be determined by a Bigger Boyz Toyz Technician upon inspection.

Warranties do not cover accidents, misuse, neglect, natural disaster or act of God or other external causes, or damage caused by operating the equipment in a manner that is not described in the instructions.

Warranty does not cover consumables such as tyres, blades, pull starts and belts.

Our products come with guarantees that cannot be excluded under the Australian Consumer Law. You are entitled to a replacement or refund for a major failure and for compensation for any other reasonably foreseeable loss or damage. You are also entitled to have the goods repaired or replaced if the goods fail to be of acceptable quality and the failure does not amount to a major failure.

Spare Parts

Spare parts are available. Please see our website (www.bbta.com.au) or contact us at bbt@bbta.com.au for more details.

YOU MAY ALSO LIKE

STUMP GRINDER



LOG SPLITTER



MULCHER / CHIPPER



ZERO TURN MOWER



Enquiry or problems with our products?

CALL US (02) 4257 4787



www.bbta.com.au

COPYRIGHT © BIGGER BOYZ TOYZ AUSTRALIA PTY
Unit 2/3 Delta Place Albion Park Rail NSW 2527
BBT-TR-13.5BS-MNL1710